



SELF STUDY REPORT

FOR

2nd CYCLE OF ACCREDITATION

PUSHPAGIRI COLLEGE OF DENTAL SCIENCES

**PUSHPAGIRI MEDICITY PERUMTHURUTHY, TIRUVALLA, KERALA
689107**

www.dentalcollege.pushpagiri.net

Submitted To

NATIONAL ASSESSMENT AND ACCREDITATION COUNCIL

BANGALORE

February 2022

1. EXECUTIVE SUMMARY

1.1 INTRODUCTION

The Pushpagiri Medical Society, a Society registered under the Travancore Cochin Literary Scientific & Charitable Societies Registration Act of 1955, and it comes under the purview of the Malankara Catholic Archdiocese of Thiruvalla. This Society manages Pushpagiri College of Dental Sciences. The other institutions under Pushpagiri Medical Society are Pushpagiri Institute of Medical Sciences and research centre, Pushpagiri College of Pharmacy, Pushpagiri College of Nursing, Pushpagiri Research Centre, and Pushpagiri College of Allied Health Services. The Archbishop of the Catholic Archdiocese of Thiruvalla, His Grace Most. Rev. Dr. Thomas Mar Koorilos is the Patron of the Society and an eight member Governing Board is the policy laying body of the Society.

Pushpagiri College of Dental Sciences(PCDS), recognized by the Dental Council of India and Ministry of Health & Family Welfare, Government of India was founded in 2006. The institution is the realization of the vision of the management to provide quality Dental education to aspiring students of Kerala of which a good percentage hail from minority communities. The institution has an annual intake of 50 students in BDS course, 14 students in MDS courses and 10 students in DORA course. Pushpagiri College of Dental Sciences was initially affiliated to Mahatma Gandhi University, Kottayam (2006-2010) and is currently affiliated to Kerala University of Health Sciences (KUHS) Thrissur (2010 till date). Four of our faculties are recognized PhD guides by KUHS with two PhD scholars currently registered. Five of our departments are recognized as "Centre of Research" under KUHS. The International airports Thiruvananthapuram and Kochi are 128 Km and 112 Km away in the south and north directions respectively. The coastal belt of the country is 25 Km away in the west direction and the Western Ghats lie 70 km east. Geographically, the town lies at 9.60 longitude and 76.50 latitude. The southwestern breeze ever passing through the surrounding paddy fields and patting the treetops provides a cool climate in this scenic location, which is quite distant from the hustle and bustle of the town which is ideal for academic pursuits.

Vision

We Care God Cures.

Mission

To work towards a knowledge society with life in abundance through science and technology, improving health care for our immediate community, the state, the country and the world at large.

The mission and vision statements of the institution are clearly defined and are translated into its various academic and administrative activities. It aims to provide a truly outstanding private educational experience for students which encompass global trends in their chosen field of education through a student centric approach in

teaching, fostering higher levels of learning; critical thinking and evidence-based health care capabilities, without compromising on the charitable nature of the institution. The institution strives to instill and nurture strict professionalism and competency based on catholic values and compassion for fellow human beings.

1.2 Strength, Weakness, Opportunity and Challenges(SWOC)

Institutional Strength

The vision and mission of Pushpagiri College of Dental Sciences are framed in clear terms. The management, faculty and staff for ensuring quality in every aspect of Dental Education. Consistent top academic performances of the institution in all examinations of the Kerala University of Health Sciences competing 25 dental colleges in the state.

Excellent infrastructure facilities, including classrooms, laboratories, library and other support facilities.

Specialised clinics like TMJ clinic which is exclusively functioning for treatment of TMJ problem patients with advanced equipment viz T Scan.

Remote Digital Valuation Centre which is established for the conduct of paper valuation of all University examinations.

Priority dental clinic with art of the state infrastructure which provides comprehensive dental treatments to patients.

Very good ambience for teaching, learning, research and other curricular and extra-curricular activities.

Academic collaborations with reputed Universities and Institutions at national and regional levels.

Internal Quality Assurance System has being implemented for continuous improvement of all aspects of the institution.

Curricular, co-curricular and extra-curricular programmes aimed at holistic development of students.

Institutional Commitment to develop avenues and networks for community oriented activities. Financial support given to economically weak students.

Well-equipped hostels managed by priests and nuns

Institutional Weakness

The affiliated system which limits academic freedom of the college.

Lack of faculty with PhD.

Lack of a multi-cuisine canteen for catering to students, faculty and patients needs.

Lack of an Indoor sports complex.

Alternate source of energy

Water harvesting/ recycling

Institutional Opportunity

Opportunities to attract research funding from Central and State Government agencies.

Creation of more satellite clinics to cater to the dental needs of the rural sectors.

The institution has made leaps and bounds to be the premier dental college in Kerala and aims to be among the top dental colleges in India in the next 10 years. The WEEK magazine survey 2021 had ranked PCDs as the 24th Best private dental college in the country and the best dental college in the state.

Institutional Challenge

Continue attracting good students to the College in spite of the presence of a large number of dental colleges in the state.

Maintain the top ranking among 25 dental colleges and to scale greater heights.

Attract and retain expert faculty at all levels.

Develop research works of high quality and increase publications in International high impact factor journals.

1.3 CRITERIA WISE SUMMARY

Curricular Aspects

Pushpagiri College of Dental Sciences was established in the year 2006 and was affiliated to Mahatma Gandhi University, Kottayam from 2006 – 2009. The Kerala University Health Sciences (KUHS) was established by Kerala University Health Sciences Act 2010 after which Pushpagiri College of Dental Sciences got affiliated with KUHS from the year 2010 onwards. The Dental Council of India (DCI) has a national curriculum framework. Once in 5 years, DCI develops a model curriculum by involving national and international expert bodies. This curriculum is made contemporary and socially relevant by the university and is adopted by the affiliated colleges. The institution has a representative member Dr.A.Devadathan as Dean,
Faculty of Dental Sciences, KUHS and Member of Board of Examinations and the main duty of this board is to suggest to KUHS regarding reforms and revisions to make a well structured curriculum of all the courses offered along with precise schedules for conducting exams and publication of results such that courses are

completed in a time bound manner. In implementation of the curricula the institution keeps abreast of global trends by giving thrust to areas like prevention of dental diseases, evidence based clinical practices, research, Infection Control, sterilization and asepsis, bio-waste management etc. These trends also reflect in the institution's teaching and learning, with incorporation of didactic lectures, group discussions, problem based learning, use of multimedia, e- content preparation and audiovisual aids. The Internal Quality Assurance Cell (IQAC) which was formulated to monitor and improve the quality of all aspects of the institution including academics, patient care, research, teaching and learning, student activities, plays a major role in curricular implementation and feedback.

Teaching-learning and Evaluation

The goals and objectives of the institution translates into its academic programs which produces quality dental graduates, well equipped with advanced knowledge and clinical skills, competent to render excellent dental care to the society. Admissions are limited and is based purely on merit. By limiting number of admissions it is able to direct its expertise and guidance to the development of the student, devoting individual attention, honing students' skills and enabling them to attain greater levels of professional competence and confidence. The institution conducts an annual survey on academic growth of students. Slow learners are identified and extra classes, special clinical training and class tests administered for them. Benefits of this practice were evident in the academic performance of slow learners of the institution which was comparable to the performance of general students of their batch. Institution has a well defined policy on inviting experts in the field of dentistry to enhance the teaching learning activity. Eminent faculty members are invited to deliver guest lectures, online programmes, presentations, clinical skill orientations for both Undergraduate students and Postgraduate students. Institution creates a scientific temper among the students by encouraging them to present E-posters and scientific papers in various national and local conferences, quiz competitions and debates. Institution encourages all the students to undertake short research projects and also to publish papers. Orientation tours are also conducted in the Pushpagiri Research Center for undergraduate and postgraduate students thereby getting an exposure to research activities undergoing in our institution. A system of mentoring & provision for psychological counseling ensures the mental and emotional well being of the student. They are encouraged to practice yoga regularly. Student centric teaching methods, student friendly hostels and a sprouting lush green campus, makes this institution a perfect place for student's academic endeavors.

Research, Innovations and Extension

Research is a major thrust area for the institution. The institution has a structured Scientific Review Committee to facilitate and promote research. The Institutional Ethics Committee of the institution grants ethical clearance for the research proposals cleared by the Scientific Review Committee after thorough scrutiny. Four of our faculties are recognized PhD guides under KUHS. Pushpagiri Research Centre, (PRC) was established in the year 2010. The centre is a Department of Scientific and Industrial Research (DSIR) recognized Scientific and Industrial Research Organization (SIRO). Situated in the campus of Pushpagiri Institute of Medical Sciences and Research Centre, PRC features open-plan, multifunctional research laboratories. Focusing on advanced quantitative approaches to specific biotechnology challenges at the interface of medicine and biology, the PRC offers a unique pluralistic and open research culture that is supported by world-class infrastructure. PCDS utilizes the excellent research facilities of the PRC for research work of its students, post graduate students and interns. The completed research works are also published in various National, International and local journals. Pushpagiri Medical Society has a Medical Technological Business Incubation Centre, which is the first of its kind in the state of Kerala, where various biomedical products in the field of regenerative medicine were

developed. Dr K George Varghese, Principal of this institution serves as a member of the KUHS- University Ethics Committee since 2017 onwards. The committee provides necessary directions and guidelines for the conduct of researches in its affiliated institutions.

Dental camps and outreach programmes are conducted by the department of Public Health Dentistry. More than two hundred dental camps were conducted during the past five years. Camps are conducted in schools to educate the young about the importance of oral health care and also screen children for dental diseases. Interns, faculty members, under graduate and postgraduate students actively participate in these camps. Oral cancer screening camps, anti-tobacco campaign and awareness programmes are conducted by Dept of Oral & Maxillofacial Pathology. Faculty members of all departments participate in live radio programmes organized by the Department of Public Health Dentistry of Pushpagiri College of Dental Sciences.

Infrastructure and Learning Resources

The institution is situated in a sprawling 5.01 acres of land. This houses the college office, nine departments, laboratories, central library, mini auditorium and other facilities for students and faculty. The institution has a 1500 sq. m. auditorium with a seating capacity for 1000 students. Separate staff quarters are available for both male and female staff. The campus also houses separate well furnished hostels for both boys and girls. To ensure optimum utilization of infrastructure the institution adopts a no duplication of resources and equipments and resources sharing policy between departments. The Institution has provided all its departments with facilities like office room, common room, and separate rest rooms for women students and staff. Elevators and wheel chair facilities for differently-abled persons are made available. The mobile dental unit is a state of the art facility which contains two dental units with all the attachments, separate section and equipments for sterilization and disinfection and seating capacity for ten persons. The institution has nine Diagnostic Service Departments. There are 19 clinical laboratories in the institution. 9 undergraduate laboratories, 6 post graduate laboratories 2 ceramic and casting laboratories and one histopathology and hematology laboratory. The hospital have a well-defined polices for prevention of hospital-acquired infections. There is a central sterilization system. Aseptic protocols are followed in all departments. The institution's library learning facility comprises a total area of the library is 441.88 sq m. Total seating capacity of the library is 200. Working hours is from 8 am to 8 pm (Monday to Saturday). The central library has a total of 4039 books and 1574 titles. The institution has a comprehensive IT infrastructure policy. The institution is currently in the process of adopting digitalized administration, academic and patient management system, including, Hospital Management Information System (HMIS) and Electronic Medical Records (EMR) system. The institution has already installed digital radiographic units with connectivity to all departments via LAN. The institution has Wi-Fi facility in all class rooms, departments and library, to adopt paperless hospital management system, install smart classrooms and e-learning facilities. All the classrooms and seminar rooms available in the institution are ICT enabled and are provided with LCD projectors. The institution has a 10MB dedicated line for National Knowledge Network (NKN) connectivity (BSNL) which is in the process of completion

Student Support and Progression

The institute teaches students to emulate high professional benchmarks and they are also taught to heal with a humane touch. Students are trained to be self-reliant and serve the community at large. The institution provides an independent student support and mentoring. Every batch of students is provided with year wise guidance about academic curriculum, clinical orientation programs, guest lecturer workshops, career orientation symposiums rendering students for their soft skill development and career path identification. The institution

focuses on comprehensive student progress by encouraging participation in scientific and cultural events, sport events and extra-curricular activities, designing orientation tours making flexible academic arrangements for participants. Institution facilitates the students to publish materials like catalogues, wall magazines, institution magazines. Feedback from students is used for planning and developing support services. Student grievance redressal cell allows students to put forward their complaints and initiates appropriate remedial measures. The institution has successful track record of students appearing and qualifying in competitive examinations. It fortifies student entrepreneurship and research activities uplifting the proficient bubbles to the surface. This Institution believes in training them for today's international market as efficient doctors, managers, administrators, marketing strategists and above all as compassionate human beings!

Governance, Leadership and Management

The institution aims to provide a truly outstanding private educational experience for students which encompasses global trends in their chosen field of education through a student centric approach in teaching, fostering higher levels of learning, critical thinking and evidence based health care capabilities, without compromising on the charitable nature of the institution. The institution strives to instill and nurture strict professionalism and competency based on catholic values and compassion for fellow human beings. The governance of the institution is reflective of an effective leadership. The leadership has developed governance strategies for the institution in terms of required infrastructure with space, equipment and support facilities for undertaking research. The institution fosters a culture of participative management through the Director, Principal, Vice Principals and Head of the Departments. The institution evolved a knowledge management strategy which encompasses aspects such as access to Information technology through wifi, National knowledge network, data banks, and open access resources with effective intranet facilities with unrestricted access to learners. Faculty Empowerment strategies in the institution incorporates training programs, seminars, conferences for enhancing knowledge and skills. Feed backs collected from various holders of the institution including staff, students and parents through regular interaction aids in evaluating the teaching and learning process. A well structured coordinated and hierarchical monitoring system forms the backbone of the college through which organizational needs are identified. The institution fosters a culture of participative management through the Director, Principal, Vice Principals and Head of the Departments. The institution functions to contribute at a National level to meet out the needs of the underprivileged. The IQAC conducts clinical audits of teaching hospital and is also represented by external members as Panchayath member, medical officer from primary health centre.

Institutional Values and Best Practices

Pushpagiri Medical Society has developed a green policy for all its constituent institutions and has formulated guidelines for developing eco-friendly campuses that strive to reduce the carbon foot-print by achieving carbon neutrality, reduce energy consumption, proper waste management, developing green buildings and use of green materials as much as possible. The Institution has an established Bio-hazard waste management protocol that is closely monitored. Car pooling whenever possible for faculty and college buses for students, institution promotes carbon neutrality of the environment. Pushpagiri College of Dental Sciences in association with Pushpagiri College of Pharmaceutical Sciences maintains a small but beautiful medicinal plantation in around 30 cents of land opposite boys' hostel. This medicinal Plants garden has around 50 species of plants of medicinal value. **Community oral health education program:** conducted on Radio Macfast 90.4 FM station, Tiruvalla for educating a wide geographic audience especially disadvantaged groups of community at minimal expense has been whole heartedly appreciated by the masses. Bystander Motivation Programme: An innovative

and informative practice to educate people accompanying patients at the dental college outpatient department using multimedia presentations and demonstrations like posters and models has been very futile in imparting dental knowledge to the layperson. Motivated bystanders are provided oral prophylaxis free of cost.

Dental Part

The institution ensures adequate training for all the students admitted based on NEET qualifying exams. The preclinical skill labs improve the preclinical skills. The institution follows infection control protocols and PIMS provide an Infection control manual to all sister institutions. All students and employees are mandatorily immunized against hepatitis. Every year orientation for freshly admitted students, white coat ceremony, workshops on patient care and orientation programmes for interns are being organized. High end equipments such as CBCT, endoscopic microscope, dental laser unit, TMJ scan, etc are made available. Students are being trained in the comprehensive clinic, implant clinic, special care clinic and tobacco cessation clinic. Steps are being taken to make sure that students attain specific competencies. Dental education unit intends to organize for faculty development programmes. A few of our faculties have procured fellowships from various boards/Universities.

2. PROFILE

2.1 BASIC INFORMATION

Name and Address of the College	
Name	PUSHPAGIRI COLLEGE OF DENTAL SCIENCES
Address	Pushpagiri Medicity Perumthuruthy, Tiruvalla, Kerala
City	Thiruvalla
State	Kerala
Pin	689107
Website	www.dentalcollege.pushpagiri.net

Contacts for Communication					
Designation	Name	Telephone with STD Code	Mobile	Fax	Email
Principal	K George Varghese	0469-2645282	9447021617	-	dentalcollege@pushpagiri.in
IQAC / CIQA coordinator	S Sunil	0469-2645210	9447101562	-	sunilomfp@gmail.com

Status of the Institution	
Institution Status	Private and Self Financing
Institution Fund Source	No data available.

Type of Institution	
By Gender	Co-education
By Shift	Regular

Recognized Minority institution	
If it is a recognized minority institution	Yes Minority Status certificate.pdf
If Yes, Specify minority status	
Religious	Christian
Linguistic	
Any Other	

Establishment Details	
Date of establishment of the college	01-01-2006

University to which the college is affiliated/ or which governs the college (if it is a constituent college)		
State	University name	Document
Kerala	Kerala University of Health Sciences	View Document

Details of UGC recognition		
Under Section	Date	View Document
2f of UGC		
12B of UGC		

Details of recognition / approval by statutory / regulatory bodies other than UGC (MCI, DCI, PCI, INC, RCI, AYUSH, AICTE etc.)				
Statutory Regulatory Authority	Recognition/Approval details Institution/Department programme	Day,Month and year(dd-mm-yyyy)	Validity in months	Remarks
DCI	View Document	05-08-2015	60	

Recognitions	
Is the College recognized by UGC as a College with Potential for Excellence(CPE)?	No
Is the college recognized for its outstanding performance by national or international agencies such as DSIR, DBT, ICMR, UGC-SAP, AYUSH, WHO, UNESCO etc.?	No

Location and Area of Campus				
Campus Type	Address	Location*	Campus Area in Acres	Built up Area in sq.mts.
Main campus area	Pushpagiri Medicity Perumthuruthy, Tiruvalla, Kerala	Semi-urban	5.01	14189.11

2.2 ACADEMIC INFORMATION

Details of Programmes Offered by the College (Give Data for Current Academic year)						
Programme Level	Name of Programme/Course	Duration in Months	Entry Qualification	Medium of Instruction	Sanctioned Strength	No.of Students Admitted
UG	BDS,Dentistry	66	NEET UG EXAM	English	50	50
PG	MDS,Dentistry	36	NEET PG EXAM	English	2	2
PG	MDS,Dentistry	36	NEET PG EXAM	English	2	2
PG	MDS,Dentistry	36	NEET PG EXAM	English	3	3
PG	MDS,Dentistry	36	NEET PG EXAM	English	2	2
PG	MDS,Dentistry	36	NEET PG EXAM	English	3	3
PG	MDS,Dentistry	36	NEET PG EXAM	English	2	2

Position Details of Faculty & Staff in the College

Teaching Faculty												
	Professor				Associate Professor				Assistant Professor			
	Male	Female	Others	Total	Male	Female	Others	Total	Male	Female	Others	Total
Sanctioned by the UGC /University State Government	6				11				0			
Recruited	4	2	0	6	6	5	0	11	0	0	0	0
Yet to Recruit	0				0				0			
Sanctioned by the Management/Society or Other Authorized Bodies	9				4				0			
Recruited	7	2	0	9	2	2	0	4	0	0	0	0
Yet to Recruit	0				0				0			
	Lecturer				Tutor / Clinical Instructor				Senior Resident			
	Male	Female	Others	Total	Male	Female	Others	Total	Male	Female	Others	Total
Sanctioned by the UGC /University State Government	8				22				0			
Recruited	5	3	0	8	9	13	0	22	0	0	0	0
Yet to Recruit	0				0				0			
Sanctioned by the Management/Society or Other Authorized Bodies	0				0				0			
Recruited	0	0	0	0	0	0	0	0	0	0	0	0
Yet to Recruit	0				0				0			

Non-Teaching Staff				
	Male	Female	Others	Total
Sanctioned by the UGC /University State Government				89
Recruited	24	62	0	86
Yet to Recruit				3
Sanctioned by the Management/Society or Other Authorized Bodies				86
Recruited	24	62	0	86
Yet to Recruit				0

Technical Staff				
	Male	Female	Others	Total
Sanctioned by the UGC /University State Government				16
Recruited	5	9	0	14
Yet to Recruit				2
Sanctioned by the Management/Society or Other Authorized Bodies				14
Recruited	5	9	0	14
Yet to Recruit				0

Qualification Details of the Teaching Staff

Permanent Teachers										
Highest Qualification	Professor			Associate Professor			Assistant Professor			Total
	Male	Female	Others	Male	Female	Others	Male	Female	Others	
D.sc/D.Litt/LLD/DM/MCH	0	0	0	0	0	0	0	0	0	0
Ph.D.	0	0	0	0	0	0	0	0	0	0
M.Phil.	0	0	0	0	0	0	0	0	0	0
PG	11	4	0	8	7	0	0	0	0	30
Permanent Teachers										
Highest Qualification	Lecturer			Tutor / Clinical Instructor			Senior Resident			Total
	Male	Female	Others	Male	Female	Others	Male	Female	Others	
D.sc/D.Litt/LLD/DM/MCH	0	0	0	0	0	0	0	0	0	0
Ph.D.	0	0	0	0	0	0	0	0	0	0
M.Phil.	0	0	0	0	0	0	0	0	0	0
PG	9	8	0	0	0	0	0	0	0	17

Temporary Teachers										
Highest Qualification	Professor			Associate Professor			Assistant Professor			Total
	Male	Female	Others	Male	Female	Others	Male	Female	Others	
D.sc/D.Litt/LLD/DM/MCH	0	0	0	0	0	0	0	0	0	0
Ph.D.	0	0	0	0	0	0	0	0	0	0
M.Phil.	0	0	0	0	0	0	0	0	0	0
PG	0	0	0	0	0	0	0	0	0	0
Highest Qualification	Lecturer			Tutor / Clinical Instructor			Senior Resident			Total
	Male	Female	Others	Male	Female	Others	Male	Female	Others	
D.sc/D.Litt/LLD/DM/MCH	0	0	0	0	0	0	0	0	0	0
Ph.D.	0	0	0	0	0	0	0	0	0	0
M.Phil.	0	0	0	0	0	0	0	0	0	0
PG	0	0	0	0	0	0	0	0	0	0

Part Time Teachers										
Highest Qualification	Professor			Associate Professor			Assistant Professor			Total
	Male	Female	Others	Male	Female	Others	Male	Female	Others	
D.sc/D.Litt/LLD/DM/MCH	0	0	0	0	0	0	0	0	0	0
Ph.D.	0	0	0	0	0	0	0	0	0	0
M.Phil.	0	0	0	0	0	0	0	0	0	0
PG	0	0	0	0	0	0	0	0	0	0
Highest Qualification	Lecturer			Tutor / Clinical Instructor			Senior Resident			Total
	Male	Female	Others	Male	Female	Others	Male	Female	Others	
D.sc/D.Litt/LLD/DM/MCH	0	0	0	0	0	0	0	0	0	0
Ph.D.	0	0	0	0	0	0	0	0	0	0
M.Phil.	0	0	0	0	0	0	0	0	0	0
PG	0	0	0	0	0	0	0	0	0	0

Details of Visting/Guest Faculties				
Number of Visiting/Guest Faculty engaged with the college?	Male	Female	Others	Total
	0	0	0	0
Number of Emeritus Professor engaged with the college?	Male	Female	Others	Total
	0	0	0	0
Number of Adjunct Professor engaged with the college?	Male	Female	Others	Total
	0	0	0	0

Provide the Following Details of Students Enrolled in the College During the Current Academic Year

Programme		From the State Where College is Located	From Other States of India	NRI Students	Foreign Students	Total
UG	Male	5	0	0	0	5
	Female	43	0	2	0	45
	Others	0	0	0	0	0
PG	Male	1	0	0	0	1
	Female	13	0	0	0	13
	Others	0	0	0	0	0
Diploma	Male	4	0	0	0	4
	Female	4	0	0	0	4
	Others	0	0	0	0	0

Provide the Following Details of Students admitted to the College During the last four Academic Years					
Programme		Year 1	Year 2	Year 3	Year 4
SC	Male	1	1	1	1
	Female	2	2	3	2
	Others	0	0	0	0
ST	Male	0	0	0	0
	Female	0	0	0	0
	Others	0	0	0	0
OBC	Male	1	3	0	2
	Female	11	8	9	12
	Others	0	0	0	0
General	Male	5	7	6	10
	Female	35	35	34	34
	Others	0	0	0	0
Others	Male	1	0	4	2
	Female	6	6	4	6
	Others	0	0	0	0
Total		62	62	61	69

General Facilities	
Campus Type: Pushpagiri Medicity Perumthuruthy, Tiruvalla, Kerala	
Facility	Status
• Auditorium/seminar complex with infrastructural facilities	Yes
• Sports facilities	
* Outdoor	Yes
* Indoor	Yes
• Residential facilities for faculty and non-teaching staff	Yes
• Cafeteria	Yes

• Health Centre	
* First aid facility	Yes
* Outpatient facility	Yes
* Inpatient facility	Yes
* Ambulance facility	Yes
* Emergency care facility	Yes
• Health centre staff	
* Qualified Doctor (Full time)	0
* Qualified Doctor (Part time)	1
* Qualified Nurse (Full time)	2
* Qualified Nurse (Part time)	0
• Facilities like banking, post office, book shops, etc.	Yes
• Transport facilities to cater to the needs of the students and staff	Yes
• Facilities for persons with disabilities	Yes
• Animal house	Yes
• Power house	Yes
• Fire safety measures	Yes
• Waste management facility, particularly bio-hazardous waste	Yes
• Potable water and water treatment	Yes
• Renewable / Alternative sources of energy	No
• Any other facility	Alternative source of energy- Solar Power system is under installation.

Hostel Details		
Hostel Type	No Of Hostels	No Of Inmates
* Boys' hostel	1	30
* Girls's hostel	1	143
* Overseas students hostel	0	0
* Hostel for interns	2	21
* PG Hostel	2	15

Institutional preparedness for NEP

1. Multidisciplinary/interdisciplinary:	The institution has taken measures for the development of students with the introduction of multidisciplinary courses viz Certificate in Oral Implantology which is an integration of three departments- Prosthodontics, Oral and Maxillofacial Surgery and periodontics. The students are taught with the help of faculty members of the 3 departments available in the Oral Implantology clinic. We have organized State Triple O [Joined forum of three specialities :Oral Medicine & Radiology, Oral & Maxillofacial Surgery and Oral & Maxillofacial Pathology] conference in 2018 and 2020.
2. Academic bank of credits (ABC):	The institution plans to register in the Academic Bank of Credits thereby enabling the students to access their academic credits, awards and certificates through this system.
3. Skill development:	The institution is enabling the students to develop their clinical skills by the set up of clinical skill laboratories. The clinical skill laboratory will enhance the clinical skills of the students by performing various clinical procedures under the direct supervision of the faculty. The institution is also enabling the students to develop higher order cognitive skills by engaging the students in critical thinking, problem solving based tasks, involving in various social commitment activities and development of team work and leadership qualities under the NSS unit, students union activities, Green club activities, participation in dental camps, visit to orphanages etc.

4. Appropriate integration of Indian Knowledge system (teaching in Indian Language, culture, using online course):	The curriculum should be reformed with the integration of the various systems of Indian medicine- AYUSH- Ayurveda, Yoga and Naturopathy, Unani, Siddha and Homeopathy in Dentistry. The students should understand the various treatment modalities for dental problems in the various current systems of Indian medicine apart from Allopathy.
5. Focus on Outcome based education (OBE):	The Outcome based education system should be introduced in Dental Curriculum by the Dental Council of India. A competency based dental education should be introduced in the curriculum of dental students. The faculty members are currently being trained about the outcome based dental education system through periodic faculty development programmes by the Dental Education Unit of the institution.
6. Distance education/online education:	At present the institution is providing a hybrid mode of teaching which includes offline and online teaching. Periodic online CDE programmes, workshops are conducted for faculty and students. Similarly online clinical knowledge enhancement lectures are periodically conducted for third year and final year students by eminent national and international speakers of various specialities. This creates a great learning experience for the students.

Extended Profile

1 Students

1.1

Number of students year-wise during the last five years

2020-21	2019-20	2018-19	2017-18	2016-17
368	357	356	349	387
File Description		Document		
Institutional data in prescribed format(Data templ		View Document		

1.2

Number of outgoing / final year students year-wise during the last five years

2020-21	2019-20	2018-19	2017-18	2016-17
16	65	55	63	65
File Description		Document		
Institutional data in prescribed format(Data templ		View Document		

1.3

Number of first year Students admitted year-wise in last five years.

2020-21	2019-20	2018-19	2017-18	2016-17
72	69	61	62	62
File Description		Document		
Institutional data in prescribed format(Data templ		View Document		

2 Teachers

2.1

Number of full time teachers year-wise during the last five years

2020-21	2019-20	2018-19	2017-18	2016-17
64	63	60	58	56
File Description		Document		
Institutional data in prescribed format(Data templ		View Document		

2.2

Number of sanctioned posts year-wise during the last five years

2020-21	2019-20	2018-19	2017-18	2016-17
64	63	60	58	56
File Description		Document		
Institutional data in prescribed format(Data templ		View Document		

3 Institution

3.1

Total Expenditure excluding salary year-wise during the last five years (INR in Lakhs)

2020-21	2019-20	2018-19	2017-18	2016-17
386.70068	214.11798	184.05829	126.55344	182.0426
File Description		Document		
Institutional data in prescribed format(Data templ		View Document		

4. Quality Indicator Framework(QIF)

Criterion 1 - Curricular Aspects

1.1 Curricular Planning and Implementation

1.1.1 The Institution ensures effective curriculum planning, delivery and evaluation through a well defined process as prescribed by the respective regulatory councils and the affiliating University.

Response:

The curriculum is designed and developed by the parent university based on the guidelines of Dental Council of India (DCI) and Kerala University of Health Sciences. Being an affiliated institution, we ensure that the academic delivery of both BDS and MDS programs is as prescribed by the university. However, our institution prides itself on offering numerous value additions to ensure the student is enriched in various aspects of professional and personal life. A number of add on courses and guest lectures, CDE, workshops and hands-on by reputed faculties are organized by the institution on a regular basis.

The College Council coordinates the formulation of an academic calendar and appoints a faculty in-charge for each year of study at the beginning of the academic year. The Principal, Vice principals, Heads of Departments, are involved thoroughly in the framing of the precise method of curriculum delivery.

Theory classes with topic, date and name of faculty are scheduled well in advance prior to the entry of the new batch of students. All the topics are covered for the students. Preclinical / Clinical postings are planned with clinical discussion topics and treatment demonstrations phased manner thereby providing opportunity for enhancing their clinical skills. There are 3 internal assessment exams for periodic assessment of students. University exams are conducted at the end of each academic year.

For MDS students, university examinations are conducted at the end of 3 year program. Internal assessment examinations are conducted on university pattern at end of each academic year. Academic activities namely Journal clubs, seminars, case presentations and text review are conducted as per Dental Council of India (DCI) guidelines. The time table & teaching schedules are prepared accordingly. Students have to submit library dissertation & thesis as per submission timelines. All 1st year students do pre-clinical work as per DCI requirement.

Students (BDS and MDS) maintain a record of pre-clinical and clinical work in record books/manuals.

The schedule prepared is evaluated for its effectiveness based on the input of the Heads of all Departments. Any suggestions/ recommendations made on behalf of the students are considered after discussions among the faculties. The same will then be submitted to the College Council for final review and recommendations

Revisions of curriculum are suggested are suggested from the college to the Chairman of Board of studies of KUHS at regular intervals.

File Description	Document
Any additional information	View Document
Link for Minutes of the meeting of the college curriculum committee	View Document

1.1.2 Percentage of fulltime teachers participating in BoS /Academic Council of Universities during the last five years. (Restrict data to BoS /Academic Council only)

Response: 5

1.1.2.1 Number of teachers of the Institution participating in BoS/Academic Council of universities year-wise during the last five years

2020-21	2019-20	2018-19	2017-18	2016-17
3	3	3	3	3

File Description	Document
Provide scanned copy of nomination letter such BoS and Academic Council From University/ Autonomous college	View Document
Institutional data in prescribed format	View Document

1.2 Academic Flexibility

1.2.1 Percentage of inter-disciplinary / inter-departmental courses /training across all the Programmes offered by the College during the last five years

Response: 0

1.2.1.1 Number of inter-disciplinary /inter-departmental courses /training offered during the last five years

1.2.1.2 Number of courses offered by the institution across all programs during the last five years

Response: 3

File Description	Document
Institutional data in prescribed format	View Document
Institutional data in prescribed format	View Document

1.2.2 Average percentage of students enrolled in subject-related Certificate/ Diploma / Add-on courses as against the total number of students during the last five years**Response:** 15.31

1.2.2.1 Number of students enrolled in subject related Certificate or Diploma or Add-on programs year-wise during the last five years

2020-21	2019-20	2018-19	2017-18	2016-17
54	52	69	47	56

File Description	Document
Institutional data in prescribed format	View Document
Details of the students enrolled in subject-related Certificate/Diploma/Add-on courses	View Document

1.3 Curriculum Enrichment**1.3.1 The Institution integrates cross-cutting issues relevant to gender, environment and sustainability, human values, health determinants, Right to Health and emerging demographic issues and Professional Ethics into the Curriculum as prescribed by the University / respective regulative councils****Response:**

The holistic development of students is the main purpose of the curriculum. The institution enriches the curriculum on issues pertaining to gender, environment and sustainability, human values, health determinants, right to health, on emerging demographic issues and professional ethics by integrating these topics within the curriculum.

Our institution promotes gender equity in both curricular and extracurricular activities and we arrange gender sensitization programmes on International Women's day and throughout the year highlighting pressing issues pertaining to women such as pap smear and its importance, awareness of breast cancer, cyber security etc.

We give utmost importance to the maintenance of our environment and our duty to sustain a healthy one. We have an established green club which in turn promotes awareness on environmental issues and also helps organize programmes to contribute to our environment such as campus cleaning, plantation of trees/plants, preservation of water and energy conservation etc. The students are also given orientation on topics regarding environment sustainability. The institution strictly adheres to government prescribed

regulations for the disposal of waste.

An increased emphasis on ethics in the curriculum is ensured by the public health dentistry department and community medicine department of Pushpagiri Medical College. The NSS unit of the college hosts national integration camps wherein renowned experts are invited for talks on issues like child rights and duties and talks on anti-tobacco day and world cancer awareness day etc. Further, community outreach programmes are carried out with focus on gender equity, woman empowerment, human values and Indian culture..

Our college upholds and advocates maintenance of human values. Anti-tobacco day programmes are conducted regularly in the form of patient awareness talks and as campaigns wherein educational pamphlets have been distributed to the general public in Thiruvalla town. Regular blood donation campus have been organized. AIDS Day celebrations are conducted in an effort to abolish the stigma associated with aids and promote awareness.

Our college student's union consists of a dynamic team of highly enthusiastic students who have conducted a wide array of programmes to promote the right to health and uphold human values. Flood relief programmes were conducted by our Student Union (Pegasus 2018) along with our Director Medicity campus and few non-teaching staff. Old age home visits and donation of TV are some of the other activities which have been conducted.

Other programmes promoting the right to health include our seal it program wherein free pit and fissure sealants are being provided, fabrication and delivery of free dentures by the Department of Prosthodontics, free treatment camps by the department of Public Health Dentistry, and free Oral Cancer Screening programs by the Department of Oral and Maxillofacial Pathology.

To promote health, safety and awareness on emerging demographic issues, covid orientation classes were organized for the Doctors, non-teaching staff and students. Health and welfare activities for staff and students are also arranged.

We also arrange for professional awareness and ethics talks to our faculty and students to help keep up the high ethical standards as prescribed by the University/Regulative Councils.

File Description	Document
Link for any other relevant information	View Document
Link for list of courses with their descriptions	View Document

1.3.2 Number of value-added courses offered during the last five years that impart transferable and

life skills.**Response: 5**

1.3.2.1 Number of value-added courses offered during the last five years that impart transferable and life skills.

Response: 5

File Description	Document
List of-value added courses	View Document
Institutional data in prescribed format	View Document
Brochure or any other document related to value-added course/s	View Document
Any additional information	View Document

1.3.3 Average percentage of students enrolled in the value-added courses during the last five years**Response: 13.6**

1.3.3.1 Number of students enrolled in value-added courses offered year-wise during the last five years that impart transferable and life skills

2020-21	2019-20	2018-19	2017-18	2016-17
68	59	69	47	56

File Description	Document
Institutional data in prescribed format	View Document
Attendance copy of the students enrolled for the course	View Document

1.3.4 Percentage of students undertaking field visits/Clinical / industry internships/research projects/industry visits/community postings (data for the preceding academic year)**Response: 36.68**

1.3.4.1 Number of students undertaking field visits, clinical, industry internships, research projects, industry visits, community postings

Response: 135

File Description	Document
Scanned copy of filed visit report with list of students duly attested by the Head of the institution to be provided	View Document
Institutional data in prescribed format	View Document

1.4 Feedback System

<p>1.4.1 Mechanism is in place to obtain structured feedback on curricula/syllabi from various stakeholders. Structured feedback received from:</p> <ol style="list-style-type: none"> 1. Students 2. Teachers 3. Employers 4. Alumni 5. Professionals <p>Response: C. Any 3 of the above</p>	
File Description	Document
Stakeholder feedback reports as stated in the minutes of meetings of the College Council /IQAC/ Curriculum Committee	View Document
Sample filled in Structured Feedback to be provided by the institution for each category claimed in SSR	View Document
Institutional data in prescribed format	View Document

<p>1.4.2 Feedback on curricula and syllabi obtained from stakeholders is processed in terms of:</p> <p>Response: B. Feedback collected, analysed and action has been taken</p>	
File Description	Document
Stakeholder feedback report	View Document
Institutional data in prescribed format	View Document

Criterion 2 - Teaching-learning and Evaluation

2.1 Student Enrollment and Profile

2.1.1 Due consideration is given to equity and inclusiveness by providing reservation of seats to all categories during the admission process. Average percentage of seats filled against seats reserved for various categories as per applicable reservation policy during the last five years

Response: 82.13

2.1.1.1 Number of students admitted from the reserved categories as per GOI or State Government norms year-wise during last five years

2020-21	2019-20	2018-19	2017-18	2016-17
17	21	15	17	22

2.1.1.2 Number of seats earmarked for reserved categories as per GOI or State Govt. norms year-wise during the last five years

2020-21	2019-20	2018-19	2017-18	2016-17
23	23	22	22	22

File Description	Document
Institutional data in prescribed format	View Document
Copy of letter issued by state govt. or and Central Government (which-ever applicable) Indicating the reserved categories to be considered as per the GO rule (translated in English)	View Document
Any additional information	View Document
Annual Report/ BOM report/ Admission report duly certified by the Head of the Institution	View Document
Admission extract submitted to the state OBC, SC and ST cell every year.	View Document

2.1.2 Average percentage of seats filled in for the various programmes as against the approved intake

Response: 97.79

2.1.2.1 Number of seats filled-in for various programmes offered by the College as against the approved intake during the last five years:

2020-21	2019-20	2018-19	2017-18	2016-17
72	69	61	62	62

2.1.2.2 Number of approved seats for the same programme in that year

2020-21	2019-20	2018-19	2017-18	2016-17
74	74	62	62	62

File Description	Document
The details certified by the Head of the Institution clearly mentioning the programs that are not covered under CET and the number of applications received for the same	View Document
Institutional data in prescribed format	View Document

2.1.3 Average percentage of Students admitted demonstrates a national spread and includes students from other states

Response: 0

2.1.3.1 Number of students admitted from other states year-wise during the last five years

2020-21	2019-20	2018-19	2017-18	2016-17
0	0	0	0	0

File Description	Document
Institutional data in prescribed format	View Document

2.2 Catering to Student Diversity

2.2.1 The Institution assesses the learning levels of the students, after admission and organises special Programmes for advanced learners and slow performers The Institution:

1. Follows measurable criteria to identify slow performers
2. Follows measurable criteria to identify advanced learners
3. Organizes special programmes for slow performers
4. Follows protocol to measure student achievement

Response: A. All of the above

File Description	Document
Institutional data in prescribed format	View Document
Criteria to identify slow performers and advanced learners and assessment methodology	View Document
Consolidated report of special programs for advanced learners and slow learners duly attested by the Head of the Institution	View Document

2.2.2 Student - Full- time teacher ratio (data of preceding academic year)

Response: 6:1

File Description	Document
List of students enrolled in the preceding academic year	View Document
List of full time teachers in the preceding academic year in the University	View Document
Institutional data in prescribed format (data Templates)	View Document

2.2.3 Institution facilitates building and sustenance of innate talent /aptitude of individual students (extramural activities/beyond the classroom activities such as student clubs, cultural societies, etc)

Response:

The main focus of our institution is on academics, but at the same time due importance is given to extracurricular activities as well as both indoor and outdoor sports activities. College has encouraged students to form a student's union within the campus headed by a Students Union Chairman.

All our students are given the opportunity to come forward with their interests, skills and talents apart from the field of dentistry. We pride ourselves on being able to identify students with talents in different sporting and cultural areas. These students are then provided with the platform to showcase their skills in various inter-college and intra-college sports and cultural events. Students are encouraged to participate and present in state, national and international conferences to present scientific papers and posters under

the guidance of faculty members.

Students of our institution have participated in various sports and cultural activities [dentist's day celebrations, forming a movie club, Christmas celebration etc]. They took a great initiative for old age home visit, Blood donation camp, NSS activities, maintaining a clean and green environment by saying no to plastics and planting trees.

Students actively participated in flood relief activities by providing basic amenities to the needed. They also participated in donating TV, conducting free oral screening camps on Oral Cancer day, road safety march with placards of sign boards and safety measures, organized by the institution.

The development of a student as a whole is one of the prime focus of the institution, and the entire academic, extramural, sports and other activities enable one to attain all dimensions of personal, social, intellectual, emotional, physical and psychological development.

File Description	Document
Link for any other relevant information	View Document
Link for Appropriate documentary evidence	View Document

2.3 Teaching- Learning Process

2.3.1 Student-centric methods are used for enhancing learning experiences by:

- **Experiential learning**
- **Integrated/interdisciplinary learning**
- **Participatory learning**
- **Problem solving methodologies**
- **Self-directed learning**
- **Patient-centric and Evidence-Based Learning**
- **Learning in the Humanities**
- **Project-based learning**
- **Role play**

Response:

To enhance student-learning experience, we have implemented student-centric methods in all our teaching programmes. The teaching-learning methods adopted are:

Experiential learning:

All students are required to undergo various levels of preclinical work and hands-on practice of all the dental procedures that they need to perform on patients. It's done to enhance competency through

Preclinical lab based education. Students maintain log books, participate in departmental & interdepartmental discussions, attend and present journal clubs, seminars, Posters and Clinical Club meetings at regular intervals. They present scientific papers & Posters at national/international conferences.

Integrated/Interdisciplinary learning:

Elective postings are offered across disciplines to enhance interdisciplinary learning. Faculty members, postgraduates and interns participate in Clinical Club meetings which provide opportunities for interdisciplinary discussions.

Participatory Learning:

Participation in open-ended questioning in classrooms and clinical postings encourages clear communication and provides students with reassurance that their thoughts and ideas matter. Participatory learning provides students with programmes in a structural manner to gain real-life experiences. Symposiums are conducted on career prospects, innovation, development of soft skills & leadership qualities among students.

Problem - Solving Methodologies:

Problem solving approach is used in all the departments for developing analytical skills. Clinical case diagnosis, development of management strategies for different case scenarios, projects, classroom and homework assignments etc.

Self-Directed learning:

College uses Zoom, Google meet, Dhooth platforms for online teaching where students can record the classes, or PowerPoint presentations by faculty are passed onto students which facilitates students to have re-learning and remote-learning as self-directed learning. It also allows them time to process what they have been learning without the help of others. We also provide students with multiple reference books for a subject, thus giving them options to choose from according to their understanding.

Patient-centric and Evidence-based learning:

Students have regular clinical postings in all the departments not only are they introduced into the clinical practice in all the dental specialities but also given postings in general medicine and surgery departments in general hospital as well. Evidence-based learning is provided through clinical audits, quality assessment and clinical trials to make them understand patient care outcomes.

Learning in the Humanities:

Camps are organised to understand the essence of giving back to the society and the underprivileged. Also we offer Counselling and Guidance, Interpersonal Skills development projects, Stress management talks. Students are encouraged to be more empathetic towards patients.

Project-based learning:

For analytical and creativity skills, projects are included in UG-PG programmes. Our Focus is on research as well as general awareness programs to increase dental awareness among people. Write-ups in popular magazines, Flash mobs, Rallies, Patient motivation programs where students interact with bystanders to encourage them to seek treatment for dental issues. We also encourage them to publish the project outcomes.

Role-plays:

Role Plays on simulated scenarios are practiced in various students' programmes. Role plays by students for understanding of general public such as Oral Cancer Awareness week, Dentist day, No Tobacco Day, Green club etc.

File Description	Document
Link for learning environment facilities with geotagging	View Document
Link for any other relevant information	View Document

2.3.2 Institution facilitates the use of Clinical Skills Laboratory / Simulation Based Learning The Institution:

1. Has Basic Clinical Skills / Simulation Training Models and Trainers for skills in the relevant disciplines.
2. Has advanced simulators for simulation-based training
3. Has structured programs for training and assessment of students in Clinical Skills Lab / Simulation based learning.
4. Conducts training programs for the faculty in the use of clinical skills lab and simulation methods of teaching-learning

Response: A. All of the above

File Description	Document
Report on training programmes in Clinical skill lab/simulator Centre	View Document
Proof of patient simulators for simulation-based training	View Document
Institutional data in prescribed format	View Document
Geotagged Photos of the Clinical Skills Laboratory	View Document

2.3.3 Teachers use ICT-enabled tools for effective teaching and learning process, including online e-resources

Response:

All the faculties of the institution use ICT-enabled tools for effective teaching and learning process. The institution motivates the faculty to update their skills for enhanced teaching experience. Classroom lectures are planned using online study materials and e-resources from PubMed, Google Scholar, Ebscohost. Delivery of knowledge is through chalk and blackboard, multimedia presentations; 3D and simulation-based models. Also, video demonstrations during lectures are carried out using YouTube to describe clinical procedures. Wi-Fi facility is provided for free to all teachers as well as students. All Departments and the central Library is equipped with Wifi facilities for teachers to prepare their study materials.

All the four lecture halls are well equipped with WP 220 PA amplifier set with microphone VM 22H , ceiling mount kit, camera surveillance in lecture hall 1 (HIK IP 2MP MINI BULLET D S2CD1023GOE-1) being yet another feature to monitor the hall activities.

Special surgical procedures which are done in the clinical departments are streamed live to the lecture halls for learning recent advances in the particular topic. Regular monitoring and feedbacks of all such activities are taken and amendments are made for future programs.

File Description	Document
File for list of teachers using ICT-enabled tools (including LMS)	View Document
File for details of ICT-enabled tools used for teaching and learning	View Document
Link for any other relevant information	View Document
Link for webpage describing the “LMS/ Academic Management System”	View Document

2.3.4 Student :Mentor Ratio (preceding academic year)

Response: 9:1

2.3.4.1 Total number of mentors in the preceding academic year

Response: 40

File Description	Document
Log Book of mentor	View Document
Institutional data in prescribed format	View Document
Copy of circular pertaining the details of mentor and their allotted mentees	View Document
Approved Mentor list as announced by the HEI Allotment order of mentor to mentee	View Document
Link for any other information	View Document

2.3.5 The teaching learning process of the institution nurtures creativity, analytical skills and innovation among students

Response:

Our institution always encourages innovative teaching method within the campus. Right from the first year of BDS curriculum, students are given tooth carving exercises which enhances their creativity and skills and knowledge about the basic anatomy of every tooth. Students entering Prosthodontics department are allowed to manipulate with gypsum products, create an occlusal rim that mimics human jaw, teeth setting exercises which give them an idea of how teeth are arranged in occlusion. As they enter to department of conservative dentistry, they are given an opportunity to work on typhodont for cavity preparations, crown cutting. In orthodontic department, they learn basic wire bending exercises, fabrication of appliances, model preparation and analysis. They practice suture techniques in suture bed in surgery department. All these exercises create an interest among the students regarding the subjects and prepare them well before doing work on patients. Students are taught subjects in various methods such as small group discussions, objective structured clinical examination and objective structured practical examination. Students are allowed to walk in to central library of the institution during the college working hours and spent productive time there reading various books, articles of all dental subjects.

Students are given topic for creating posters, models in various departments. Students under the guidance of faculty are allowed to take up small research projects. Institution has an institutional review board for giving ethical clearance for research works. Students understand the ethical aspect of every study and take their work seriously. Postgraduate students are given opportunity to apply for projects with funds. Students are guided to use ICT facility to present seminars and do journal discussions in the departments. Students are encouraged to participate and present in state, national and international conferences to present scientific paper and posters under the guidance of faculty members. Students under the guidance of faculty publish scientific papers in national and international scientific journals. Students are trained in various public health related aspects like tobacco cessation, patient counseling, blood donation camps, conducting free oral cancer camps under the supervision of the faculties and Head of the institution and other motivation skills through the various speciality cells functioning in the institution.

Students are encouraged and guided to design and delivery public awareness and education posters and models related various topics on the occasions of No-Tobacco Day, World AIDS Day, Oral Hygiene Day, Dentist Day, Road Safety Campaign, World Heart Day, World oral Cancer day and so on.

File Description	Document
Link for appropriate documentary evidence	View Document
Link for any other relevant information	View Document

2.4 Teacher Profile and Quality

File Description	Document
2.4.1 Average percentage of fulltime teachers against sanctioned posts during the last five years	
Response: 100	
Sanction letters indicating number of posts (including Management sanctioned posts) by competent authority (in English/translated in English)	View Document
Institutional data in prescribed format	View Document
Any additional information	View Document

2.4.2 Average percentage of fulltime teachers with Ph.D./D.Sc./ D.Lit./DM/M Ch/DNB in super specialities /other PG degrees (like MD/ MS/ MDS etc.,) in Health Sciences (like MD/ MS/ MDS etc.,) for recognition as Ph.D guides as per the eligibility criteria stipulated by the Regulatory Councils /Affiliating Universities.				
Response: 40.68				
2.4.2.1 Number of fulltime teachers with Ph.D/D.Sc./D.Lit./DM/M Ch/DNB in super specialities / other PG degrees (like MD/ MS/ MDS etc.,) in Health Sciences for recognition as Ph.D guides as per the eligibility criteria stipulated by the Regulatory Councils. Last five years data to be entered.				
2020-21	2019-20	2018-19	2017-18	2016-17
24	24	24	24	26

File Description	Document
Institutional data in prescribed format	View Document
Copies of Guideship letters or authorization of research guide provide by the the university	View Document
Any additional information	View Document
Link for additional information	View Document

2.4.3 Average teaching experience of fulltime teachers in number of years (preceding academic year)

Response: 12.69

2.4.3.1 Total teaching experience of fulltime teachers in number of years (cumulative experience)

Response: 812

File Description	Document
Institutional data in prescribed format	View Document
Consolidated Experience certificate duly certified by the Head of the insitution	View Document

2.4.4 Average percentage of teachers trained for development and delivery of e-content / e-courses during the last 5 years

Response: 2.55

2.4.4.1 Number of teachers trained for development and delivery of e-contents / e-courses year-wise during the last five years.

2020-21	2019-20	2018-19	2017-18	2016-17
6	0	1	1	0

File Description	Document
Institutional data in prescribed format	View Document
Certificate of completion of training for development of and delivery of e-contents / e-courses / video lectures / demonstrations	View Document
Link for additional information	View Document
Web-link to the contents delivered by the faculty hosted in the HEI's website	View Document

2.4.5 Average Percentage of fulltime teachers who received awards and recognitions for excellence in teaching, student mentoring, scholarships, professional achievements and academic leadership at State, National, International levels from Government / Government-recognized agencies / registered professional associations / academies during the last five years

Response: 0.32

2.4.5.1 Number of fulltime teachers who received awards and recognitions for excellence in teaching and student mentoring, scholarships, professional achievements and academic leadership at State, National, International levels from Government / Government-recognized agencies / registered professional associations / *academies* during the last five years

2020-21	2019-20	2018-19	2017-18	2016-17
0	1	0	0	1

File Description	Document
Institutional data in prescribed format	View Document

2.5 Evaluation Process and Reforms

2.5.1 The Institution adheres to the academic calendar for the conduct of Continuous Internal Evaluation and ensures that it is robust and transparent

Response:

The yearly academic calendar of the institution is prepared after taking into account the feedback received from the principal , college curriculum/ academic committee ,mentorship committee and the administrative wing and student union executive committee . A draft on the calendar is prepared and circulated among all concerned before finalizing . Special attention is paid to ensure that the calendar confers to the academic schedule of Kerala university of health sciences. Innovative and novel strategies being followed around the world is taken note of and is discussed threadbare in the college curriculum

committee .These ideas which are feasible in our institution are adapted accordingly or modified before implementing as per need .

Once a schedule is prepared for the academic program, all are directed to mandatorily follow it. Only in exceptional circumstances when there is no other alternative , the time frame might be rescheduled after getting all required permission from the head of the institution .In 2016, 2017 and 2018 ,there have been no such incidences but in 2019 and 2020, some of the exam dates had to be rescheduled due to the covid pandemic .

The marks obtained in the internal assessment examinations are discussed with each individual candidates along with the answer sheets and the areas of strengths and weaknesses are discussed . Any queries raised by the candidates on the evaluation system is also cleared .If the candidate is unsatisfied with this ,they are encouraged to approach either the mentors or if needed the academic vice principal on a confidential basis .This is to ensure that there are no repercussions .

The examinations are conducted in halls with provision for video recording using cameras to ensure no malpractice during the conduct of examination. There is a proper feedback assessment on the invigilators on a yearly basis and those who do not fulfill the required standards are discreetly removed from further invigilation .

Any matters of concern about the academic performance of the candidate are discussed by the mentor during the batch PTA meeting so that the parents are also involved .This can help long way in helping the candidate by providing morals and psychological support for the students on periods of stress ,in addition it can help ensuring the full transparency in the evaluation system.

File Description	Document
Link for dates of conduct of internal assessment examinations	View Document
Link for any other relevant information	View Document
Link for academic calendar	View Document

2.5.2 Mechanism to deal with examination related grievances is transparent, time-bound and efficient

Response:

The final internal assessment marks of all departments are sent to the KUHS university through the university web portal and a copy is kept in each department and the office for documentation and future reference. The students are required to confirm the internal assessment marks before submission to the university. The students have to get their records signed and obtain work-completion certificate from the

concerned department. After obtaining no objection certificate from the concerned departments., the marks, attendance certificates for theory and practical of each subject are verified and signed by each student. The students are then required to pay the examination fees, fill forms and submit on a given date by the university. The payment of fees, uploading exam application forms and obtaining hall tickets are all done online through the university portal. This is supervised by the principal, vice principals of academics and administration. The smooth running of the exam is conducted by the exam committee, which comprises the chief examination officer, office staff, IT staff, faculty assigned for invigilation. The examination room has surveillance cameras and is recorded and produced to the university as and when required. The result is published on the university site. The university sends the original mark list by post to the Principal of the college.

The office staff and representatives to the university help the students to deal with grievances regarding the examination and the results. The whole process of the examination, the results and grievances are transparent, time-bound and very efficient.

File Description	Document
File for number of grievances regarding University examinations/Internal Evaluation	View Document
File for details of University examinations / Continuous Internal Evaluations (CIE) conducted during the last five years	View Document
File for any other relevant information	View Document

2.5.3 Reforms in the process and procedure in the conduct of evaluation/examination; including Continuous Internal Assessment to improve the examination system.

Response:

Dentistry being a clinical field of medicine requires not just acquiring theory knowledge but also the ability to perform clinical procedures in a satisfactory manner. This ensures that the standard of care provided for the passing candidates reaches the level of clinical excellence.

Our institution is affiliated to Kerala University Of Health Science through an ordinance and later Kerala University Of Health Science Act 2010 .This places limitations on the autonomy of the institution in academic matters especially syllabus ,examination pattern and system of evaluation . Some of our faculties have been and currently are representatives in university bodies like senate , dental dean and other committees of the university and also in various bodies of Dental Council of India .This has helped us in putting forth the views of the institution in academic matters and help its implementation at the university and DCI level.

But the overall reforms in the evaluation pattern is followed on a consensus basis at the university level and integration of newer policies take time as numerous institutions come under the university. The college

has to follow the pattern of examinations as stipulated by the university regulations and this places limitations on the scope for adoption of newer modalities of internal assessment.

Still we have been successful in introducing many reforms. We have introduced OSCE (objective structured clinical examination) during clinical internal assessment examination whenever possible in departments .Various stations have been allotted where different clinical skills of the students are assessed by their clinical practical knowledge in the subject in a timebound manner to evaluate their clinical competency level .Visual projection of various clinical procedure, appliances etc. , are also utilized to assess the clinical /practical knowledge of students.

During the conduct of practical /clinical examination, the various departments are encouraged to assess the students on the basis of a competency criteria .

We have introduced a system for evaluating the students while performing clinical procedures at the workplace on a grading system and integrating this grading along with the performance of the students during clinical internal assessment examinations.

The students are given various topics to study and are encouraged to conduct group discussions during classes to ensure innovations and newer ideas. Clinical situations are given as problems for the students to discuss and arrive upon a proper diagnosis and treatment modality. All these systems compliment the classical blackboard method of teaching . As per the university regulations, three internal assessment examinations are conducted in an academic year. The internal assessment marks forwarded to the university is calculated on the basis of these internal assessment examinations and a percentage of this mark is added to the university examination result. Each student has a mentor and they are assessed after the conduct of examinations and weak students are identified.

This continuous evaluation of the students along with remedial measures taken ensures that the knowledge acquired by each candidate reaches a level of excellency.

File Description	Document
Link for Information on examination reforms	View Document
Link for any other relevant information	View Document

Other Upload Files

1

[View Document](#)

2.5.4 The Institution provides opportunities to students for midcourse improvement of performance through specific interventions Opportunities provided to students for midcourse improvement of performance through:

- 1. Timely administration of CIE**
- 2. On time assessment and feedback**
- 3. Makeup assignments/tests**
- 4. Remedial teaching/support**

Response: A. All of the above

File Description	Document
Policy document of the options claimed by the institution duly signed by the Head of the Institution	View Document
Policy document of midcourse improvement of performance of students	View Document
Institutional data in prescribed format	View Document

2.6 Student Performance and Learning Outcomes

2.6.1 The Institution has stated the learning outcomes (generic and programme-specific) and graduate attributes as per the provisions of the Regulatory bodies and the University; which are communicated to the students and teachers through the website and other documents

Response:

The learning outcomes for the course are laid according to the syllabus prepared by the BoS committee of the Kerala University of Health Science. The expected outcomes are made known to all the students in the beginning of the academic year by the respective faculties. All the faculties are well aware of the learning outcomes as they are involved in the teaching and learning process. Learning outcomes for all academic programs have been displayed on the college website and are revised periodically.

The outcome is assessed by longitudinal assessment over a period of time, daily evaluations which include clinical competence of each case, viva, diagnosis, treatment planning, execution of procedure and skill set exhibited, chart/model stimulated evaluation etc. Each department has a list of treatment procedures to be done in varying levels of difficulty by each students. There is a quota of work to be done (cases to be completed) and presentations and charts or models to be presented by the students for completion of work in each department. Continuous educational programs and clinical training programs are conducted at regular periods to upgrade the knowledge as well as sharpen the clinical skills.

Students are given individual attention while performing a treatment procedure wherein every step is supervised by the staff and corrected. The faculty members becomes the students mentor, advocate, cheerleader, disciplinarian and remedial resource. The entire programmes, special lectures and discussions in the classroom are centered on the learning objectives of the institution and there is continuous evaluation of the program outcomes, program specific outcomes and course outcomes.

File Description	Document
Link for upload Course Outcomes for all courses (exemplars from Glossary)	View Document
Link for relevant documents pertaining to learning outcomes and graduate attributes	View Document
Link for methods of the assessment of learning outcomes and graduate attributes	View Document
Link for any other relevant information	View Document

2.6.2 Incremental performance in Pass percentage of final year students in the last five years

Response: 87.73

2.6.2.1 Number of final year students of all the programmes, who qualified in the university examinations in each of the last five years

2020-21	2019-20	2018-19	2017-18	2016-17
60	50	58	65	55

2.6.2.2 Number of final year students of all the programmes, who appeared for the examinations in each of the last five years

2020-21	2019-20	2018-19	2017-18	2016-17
64	68	63	69	61

File Description	Document
Trend analysis for the last five years in graphical form	View Document
Reports from Controller of Exam (COE) office/ Registrar evaluation mentioning the relevant details and the result analysis performed by the institution duly attested by the Head of the Institution	View Document
List of Programmes and the number of students passed and appeared in the final year examination each year for the last five years	View Document
Institutional data in prescribed format	View Document
Link for the annual report of examination results as placed before BoM/ Syndicate/ Governing Council for the last five years	View Document

2.6.3 The teaching learning and assessment processes of the Institution are aligned with the stated learning outcomes.

Response:

Formative and summative assessment

Formative assessments (3 nos) written, practicals, clinical, Conducted once every three months. Mapping PO is based on university exams in both theory and practical are taken into consideration. Students who secured marks

? Below 50% -Below expectations

? Between 50-59% - Low

? Between 60-69%- Medium

? More than 70% - High

The program outcomes and course outcomes are categorized into degree of complexity and further into high, moderate, low and not achieved and they are assessed by determination of knowledge, clinical skills, empathy, communication, interpersonal and managerial skills, caring attitude and maintenance of high ethical standards, research, knowledge of recent advances, knowledge and skill in use of drugs, diagnostics, multidisciplinary approach, coordination. Formative assessments as large group discussions, case discussion, revision and remedial class, individual viva- voice, Pre-clinical exercise in skill enhancement. Other methods of assessment includes internal assessments (3nos) written, Practical, clinical conducted once every 3 months and requirements of minimum 80% Attendance.

Graduate attributes in compliance with Dental Council of India

The graduates of Pushpagiri College of Dental Sciences display a strong academic background and technical skills by demonstrating a good knowledge base about identifying, investigating and managing dental diseases and keeping themselves abreast of the latest advances in the field of dentistry and health care system. The Graduates develop into individual learners with high self Efficacy and display a strong sense of personal and professional identity. The graduates are socially responsible and recognize their role in the community and with professionalism volunteer to work for the benefit of the patient society and the Profession. The students are flexible team members who are equipped to don the role of team leaders when appropriate while engaged in holistic patient care and other activities of the institution. The graduates are technologically advanced and demonstrate skillful use of technology.

File Description	Document
Link for any other relevant information	View Document
Link for programme-specific learning outcomes	View Document

2.6.4 Presence and periodicity of parent-teachers meetings, remedial measures undertaken and outcome analysis

Response:

The Annual General Body meetings have been conducted regularly from the initial formation years of the college itself. It comprises of the management, all teaching staff and parents from students of all courses. Its meetings are conducted once in a year. The annual general body elects the Executive committee members of the PTA for each academic year.

The Executive committee of the PTA consists of 8 parents and 7 teaching staff. Its meetings are conducted half yearly.

Also PTA meetings are conducted at least once a year for each of the batches from the BDS program after their first internal assessment exam. In these meetings parents are informed about the academic performance of students. Parents of wards which are low performers are made aware about their situation. Also feedback from the parents and students about any other related matter regarding college and hostel facilities are taken as discussion points.

Concerns raised and remedial measures undertaken in the various PTA meetings conducted are noted by the PTA secretary. The Principal informs the management about the same. Remedial measures are taken in consensus with the management.

File Description	Document
Link for proceedings of parent –teachers meetings held during the last 5 years	View Document
Link for follow up reports on the action taken and outcome analysis.	View Document
Link for any other relevant information	View Document

2.7 Student Satisfaction Survey

2.7.1 Online student satisfaction survey regarding teaching learning process

Response: 2.98

Criterion 3 - Research, Innovations and Extension

3.1 Resource Mobilization for Research

3.1.1 Percentage of teachers recognized as PG/ Ph.D research guides by the respective University

Response: 22.26

3.1.1.1 Number of teachers recognized as PG/Ph.D research guides during the last 5 years

2020-21	2019-20	2018-19	2017-18	2016-17
16	14	13	12	12

File Description	Document
List of full time teacher during the last five years	View Document
Institutional data in prescribed format	View Document
Copies of Guideship letters or authorization of research guide provide by the university	View Document

3.1.2 Average Percentage of teachers awarded national /international fellowships / financial support for advanced studies/collaborative research and participation in conferences during the last five years

Response: 0

3.1.2.1 Number of teachers awarded national/ international fellowship / Financial support for advanced studies/collaborative research and conference participation in Indian and Overseas Institutions year-wise during the last five years

2020-21	2019-20	2018-19	2017-18	2016-17
0	0	0	0	0

File Description	Document
Institutional data in prescribed format	View Document
Fellowship award letter / grant letter from the funding agency	View Document
Fellowship award letter / grant letter from the funding agency	View Document

3.1.3 Total number of research projects/clinical trials funded by government, industries and non-governmental agencies during the last five years

Response: 4

3.1.3.1 Number of research projects/clinical trials funded by government/industries and non-government agencies year-wise during the last five years

2020-21	2019-20	2018-19	2017-18	2016-17
1	1	1	1	0

File Description	Document
Institutional data in prescribed format	View Document
E-copies of the grant award letters for research projects sponsored by Government, industries and non-government sources such as industries, corporate houses etc	View Document

3.2 Innovation Ecosystem

3.2.1 Institution has created an ecosystem for innovations including incubation centre and other initiatives for creation and transfer of knowledge

Response:

The institution provides a research environment for the faculty and students. The college supports research through its research development unit. It conducts lectures, workshops and training classes for students and faculty. The interns are required to do a short study and encouraged to publish it in journals. They are also required to speak on a topic on Radio MACFAST weekly on a rotational basis along with a faculty. They are also encouraged to write in magazines with the guidance of a faculty. Dental camps are organized by the interns. The mobile dental unit also goes to the rural areas to provide treatment on site. The students (PG and UG) are encouraged to submit proposals to ICMR Short term studentship, ICMR financial support for MDS thesis and KSTEC student projects.

Research Center: Pushpagiri Research Centre (PRC) is a unit of Pushpagiri Medical Society which was established in 2009. The centre is recognized by the Indian Council of Medical Research, Council of Scientific and Industrial Research, Department of Science and Technology, Department of Biotechnology and Department of Atomic Energy and an approved center for PhD by KUHS. The research center at PIMS has all the research facilities including molecular biology and phytochemicals research lab, virology lab, tissue engineering and regenerative medicine lab, biochemistry lab, animal house and cold storage. The faculty and PG's conduct studies related to their thesis and other projects. The animal house facility (Reg no: 602/PO/Re/S/CPCSEA) is available for conducting studies in small animals for research for education

purpose.

Conscious Sedation Clinic

General anesthesia for special, medically compromised and uncooperative children.

Dental care for special children.

TMJ clinic: Early identification and timely management of TMJ disorders. T-scan, TENS, splint therapy are available here.

Implant clinic: The implant clinic focuses on patients requiring implant related treatments which are done by PGs and staff. Training in Implantology is an integral part of MDS in OMFS, Prosthodontics, Periodontics. This Department ensures adequate exposure for PGs to all aspects of implant therapy. The department also carries out implant related workshops for training of postgraduates and dentists from different parts of Kerala.

Tobacco cessation center: The center provides tobacco cessation counselling with regular follow-up for patients with faculty and interns everyday

Oral cancer detection center: Early detection of Premalignant disorders and malignancies are made possible with the functioning of the oral cancer detection center at the oral pathology department. Patients are referred from camps and other departments in PCDS

Museum: The posters and brochures made by the students and interns are arranged in the museum and used as education materials for the patients and bystanders.

Comprehensive clinic: Priority clinic provides team based, comprehensive dental care to patients of all ages. Faculties from all the departments and interns are posted here on a rotational basis.

File Description	Document
Link for details of the facilities and innovations made	View Document

3.2.2 Total number of workshops/seminars conducted on Intellectual Property Rights (IPR) Research methodology, Good Clinical, Laboratory, Pharmacy and Collection practices, writing for Research Grants and Industry-Academia Collaborations during the last five years

Response: 7

3.2.2.1 Number of workshops/seminars conducted on Intellectual Property Rights (IPR) and Industry-Academia Innovative practices year-wise during the last five years

2020-21	2019-20	2018-19	2017-18	2016-17
2	1	0	3	1

File Description	Document
Report of the workshops/seminars with photos	View Document
Institutional data in prescribed format	View Document

3.3 Research Publications and Awards

3.3.1 The Institution ensures implementation of its stated Code of Ethics for research. The Institution has a stated Code of Ethics for research, the implementation of which is ensured by the following:

- 1. There is an Institutional ethics committee which oversees the implementation of all research projects**
- 2. All the projects including student project work are subjected to the Institutional ethics committee clearance**
- 3. The Institution has plagiarism check software based on the Institutional policy**
- 4. Norms and guidelines for research ethics and publication guidelines are followed**

Response: B. Any 3 of the above

File Description	Document
Share the code of ethics of research clearly stating the claims of the institution duly signed by the Head of the Institution	View Document
Institutional data in prescribed forma	View Document
Any additional information	View Document

3.3.2 Average number of Ph.D/ DM/ M Ch/ PG Degree in the respective disciplines received per recognized PG teacher of the Institution during the last five years.

Response: 5.5

3.3.2.1 Number of Ph.D.s /DM/M Ch/PG degrees in the respective disciplines received per recognized PG teachers of the Institution during the last five years.

Response: 55

3.3.2.2 Number of PG teachers recognized as guides by the Regulatory Bodies / Universities during the last five years.

Response: 10

File Description	Document
PhD/ DM/ M Ch/ PG Degree Award letters of students (with guide's name mentioned)	View Document
Institutional data in prescribed format	View Document

3.3.3 Average number of papers published per teacher in the Journals notified on UGC -CARE list in the UGC website/Scopus/ Web of Science/ PubMed during the last five years

Response: 1.79

File Description	Document
Institutional data in prescribed format	View Document
Web-link provided by institution in the template which redirects to the journal webpage published in UGC notified list	View Document

3.3.4 Average number of books and chapters in edited volumes/books published and papers published in national/ international conference proceedings indexed in UGC-CARE list on the UGC website/Scopus/Web of Science/PubMed/ during the last five years

Response: 0

File Description	Document
Institutional data in prescribed format	View Document
Any additional information	View Document

3.4 Extension Activities

3.4.1 Total number of extension and outreach activities carried out in collaboration with National and International agencies, Industry, community, Government and Non-Government organizations engaging NSS / NCC / Red Cross / YRC / Institutional clubs etc. during the last five years.

Response: 504

3.4.1.1 Number of extension and outreach activities carried out in collaboration with National and International agencies, Industry, community, Government and Non-Government organizations engaging NSS/NCC/Red Cross/YRC/Institutional clubs etc. during the last five years.

2020-21	2019-20	2018-19	2017-18	2016-17
39	156	131	84	94

File Description	Document
List of students in NSS/NCC/Red Cross/YRC involved in the extension and outreach activities year-wise during the last five years	View Document
Institutional data in prescribed format	View Document
Detailed program report for each extension and outreach program should be made available, with specific mention of number of students and collaborating agency participated	View Document

3.4.2 Average percentage of students participating in extension and outreach activities during the last five years

Response: 90.65

3.4.2.1 Number of students participating in extension and outreach activities year-wise during last five years

2020-21	2019-20	2018-19	2017-18	2016-17
368	357	356	267	297

File Description	Document
Institutional data in prescribed forma	View Document
Detailed program report for each extension and outreach program should be made available, with specific mention of number of students and collaborating agency participated and amount generated Photographs or any supporting document in relevance	View Document
Any additional information	View Document

3.4.3 Number of awards and recognitions received for extension and outreach activities from Government / other recognised bodies during the last five years

Response:

The Pushpagiri College of Dental Sciences received one award from the Kerala State Excise Department, Thiruvalla circle in 2020 for active participation in “Mini Marathon & “Mega Dental Checkup and Oral Cancer Screening” held on February 10, 2020 & March 5, 2020 respectively during the 90 days intensive program organized by Kerala State Mission for Deaddiction, “Vimukthi” under Kerala State Excise Department. A total number of 100 students and 10 teachers took part in the program.

File Description	Document
Link for list of awards for extension activities in the last 5 year	View Document
Link for e-copies of the award letters	View Document
Link for any other relevant information	View Document

3.4.4 Institutional social responsibility activities in the neighborhood community in terms of education, environmental issues like Swachh Bharath, health and hygiene awareness, delivery of free/ subsidized health care and socio economic development issues carried out by the students and staff, including the amount of expenditure incurred during the last five years

Response:

Pushpagiri College of Dental Sciences encourages the faculty, students and nonteaching staff to be socially responsible and participate in activities in the neighbourhood community. These include posting in rural centers, dental health motivational and screening camps, oral cancer awareness camps, training programs that help students and faculty to help mankind, nature clubs, care for animals. The institution undertakes projects that are beneficial to the socio-economically backward people. The NSS and the student’s union take active participation in all the outreach and social activities and are involved in activities as and when they arise such as flood relief.

1. National Service Scheme

The NSS unit in PCDS (NSS/KUHS/SFU/PNT/3) is a self-financing unit from 2018. The NSS unit takes active participation in activities of the neighbourhood, Swachh Bharat, health awareness and motivational camps, hygiene awareness, especially during the COVID-19 period and in socio-economic development issues, such as flood relief work, providing fund, educational kit, etc. The NSS unit create leaders and make them responsible to wards society and the environment.

2. Rural centers

The institute has established 2 rural centers to reach the rural population with the objective of improving accessibility, availability and affordability of oral health care and promoting oral health awareness. A faculty is in charge of each of the rural center and an intern is posted on a weekly rotational basis in each of the center. A separate register is maintained for the interns.

3. Camps:

The institute conducts oral health screening, treatment, motivational and awareness camps in and around the surrounding districts. From 2016, the institute has conducted 261 camps and 25356 beneficiaries. The staff and interns take part in the camps and health education talks.

4. Projects:

The institution gives priority to projects that are beneficial to the community. The faculty, ANM and interns are trained for the different aspects of the project. The SEAL-it project (2018-2020) implemented a school-based fissure sealant program including topical fluoride application for 5-8 years aged school children of Pathanamthitta district as a part of incremental dental care.

The most recent project is the comprehensive breast cancer screening and action for women in Kerala (2020-2022).

5. Radio MACFAST:

One intern and one staff are given the opportunity to talk on oral health subjects every Wednesday on a rotational basis.

6. Publications in magazines:

Interns are also given the opportunity to publish articles in magazines along with a faculty.

7. Training and awareness programs:

Various training programs are conducted for the faculty and students in the campus and community to enable them to reach out to the community.

8. Eco-friendly campus:

Students, faculty and nonteaching keep the campus free of plastic and are members of the nature club. Every year, the students plant 5-10 saplings and look after them.

These activities help students develop personality, societal interpersonal attributes along with academics. nurture students with respect to the community concern that young people lack social and emotional competencies and moral values.

File Description	Document
Any additional information	View Document
Link for details of Institutional social responsibility activities in the neighbourhood community during the last 5 years	View Document

3.5 Collaboration

<p>3.5.1 Average number of Collaborative activities for research, faculty exchange, student exchange/ Industry-internship etc. per year for the last five years</p> <p>Response: 0.8</p> <p>3.5.1.1 Total number of Collaborative activities for research, faculty exchange, student exchange year-wise during the last five years</p> <table border="1"> <thead> <tr> <th>2020-21</th> <th>2019-20</th> <th>2018-19</th> <th>2017-18</th> <th>2016-17</th> </tr> </thead> <tbody> <tr> <td>2</td> <td>1</td> <td>1</td> <td>0</td> <td>0</td> </tr> </tbody> </table>					2020-21	2019-20	2018-19	2017-18	2016-17	2	1	1	0	0
2020-21	2019-20	2018-19	2017-18	2016-17										
2	1	1	0	0										
<p>File Description</p>		<p>Document</p>												
Institutional data in prescribed format		View Document												
Link for Additional Information		View Document												
<p>3.5.2 Total number of Functional MoUs/linkages with Institutions/ Industries in India and abroad for academic, clinical training / internship, on-the job training, project work, student / faculty exchange, collaborative research programmes etc. for last five years</p> <p>Response: 6</p> <p>3.5.2.1 Number of functional MoUs/linkages with Institutions/ industries in India and abroad for academic, clinical training / internship, on-the job training, project work, student / faculty exchange, collaborative research programmes etc. for the last five years</p> <p>Response: 6</p>														

File Description	Document
Institutional data in prescribed format	View Document
E-copies of the MoU's with institution/ industry/ corporate house, Indicating the start date and completion date	View Document
Any additional information	View Document

NAAC

Criterion 4 - Infrastructure and Learning Resources

4.1 Physical Facilities

4.1.1 The institution has adequate facilities for teaching - learning. viz., classrooms, laboratories, computing equipment, etc

Response:

Pushpagiri college of dental sciences provide adequate facilities for learning-teaching of the students. This includes well aerated lecture halls having high quality projection for teaching. The college has 4 lecture halls in 3 different floors which would help in taking classes simultaneously for different batches. Lift facilities are available for the teachers, students, patients and other staffs. The classrooms are ICT enabled which gives the students a better learning experience. Separate seminar halls are present for each department which helps the students for developing skills in the field of teaching. Maintenance of the lecture halls are done every year.

The college also provides updated and adequate facilities for clinical learning which includes conducting camps, minimum of 5 clinical hours, case discussions, demonstrations, non flexible quota systems, which encourages the students to do more cases and to improve their clinical skills.

The students are also encouraged to take special cases in every department which improve their clinical and theoretical knowledge that would help them to be familiar with more challenging clinical scenario. The good patient in flow help the students to enhance their hand and working skills, which make them better clinicians.

Free periodic dental camps are conducted in rural areas wherein the staff accompany the students and oral examination is carried out and appointments are given if necessary.

Oral cancer awareness camp, blood donation camps, world heart day and other awareness programs are conducted in an yearly basis, which helps to create awareness among the public regarding the relevance of these major health concerns.

National conferences like OOO conclave, enrich programs were conducted as teleconferences. Also online CDE programs like ignite and IKAP are conducted by outside faculty for the students. These online conferences which were introduced during the lockdown period thus helped in updating ones knowledge and thus made the covid period effective.

Well equipped ceramic laboratories and casting labs are also set up in the college for clinical and academic purposes. The college also provides computer labs with high speed network connection for academic purposes. The college library contains vast variety of national and international research papers, journals, fiction, non fictional books, all religious books which helps to sharpen the student's reading skills and enhance the knowledge.

The college provides 4 skill labs which are prosthodontic preclinical lab, conservative preclinical lab, orthodontic preclinical lab and dental materials lab. They help to increase the confidence level of the students prior to clinical postings.

The college also give opportunity to do examination of patients during medical college ward postings in the department of general medicine and general surgery which provides indepth knowledge in the subjects.

File Description	Document
Link for geotagged photographs	View Document
Link for any other relevant information	View Document
Link for list of available teaching-learning facilities such as Classrooms, Laboratories, ICT enabled facilities including Teleconference facilities etc., mentioned above.	View Document

4.1.2 The institution has adequate facilities to support physical and recreational requirements of students and staff – sports, games (indoor, outdoor), gymnasium, auditorium, yoga centre, etc. and for cultural activities

Response:

Pushpagiri college of dental sciences has adequate physical and recreational Facilities for the improvement of the physical and mental fitness of the students and staff.

The college has badminton, football Court for practising games and for conducting various competitions as well. The college has facilities for various indoor games such as carroms and other board games which help the students to their body and mind after their busy day.

The college celebrates sports day in every academic year in which both the students and the staff participate. Sports activities are also conducted during other festive seasons like the tug of war competition during onam celebration. Every year the union conducts football. And throwball competition for boys and girls respectively. Rewards are given for the winners. This would help to cultivate sportsman spirit among dental students.

Special sports championship for indoor games like chess and carroms are also conducted as a part of arts day.

Facilities for conducting indoor games like chess board, carrom board, table tennis board is set up in recreation room in hostel.

The college also ensures to conduct arts day for the students every year from the year 2012. Different competitions are conducted.

Students interested in language and vocabulary are encouraged to take part in poetry competition, story writing competition, essay writing etc. Competitions for improving artistic skills are also conducted.

Cultural competitions which include music, dance, choreo video, skit, fashion show are also a part of arts fest.

Thus arts fest helps to improve the skills of every student in different aspects.

Certificates and prizes are given to the winners for encouragement. Arts day usually ends with college day celebration.

A renowned chief guest is invited and prize distribution for winners of different competitions is conducted. One student each from boys and girls is crowned based on their performance in arts day. Offstage competition is conducted for 2 days and onstage competition for 3 days. Thus the arts day which is conducted for a period of 5 days is an enjoyable experience for the students and provides relief from the daily stress routine.

File Description	Document
Link for any other relevant information	View Document
Link for list of available sports and cultural facilities	View Document
Link for geotagged photographs	View Document

4.1.3 Availability and adequacy of general campus facilities and overall ambience

Response:

Pushpagiri dental college has hostel facilities available for both girls and boys. The hostels provide accommodation for students from 1st year to internship. The students are guided by separate wardens in each hostel. A calm and peaceful atmosphere is provided for the students for their studies. Additional recreational requirements, gymnasium, and yoga centre are also available to maintain a work-life balance.

24-hour medical facilities are available for the students since Pushpagiri Medical College is situated at a distance of about 4-5 kilometres. The students in the hostel are provided with attached bathroom facilities in their rooms and this helps to prevent unnecessary rush.

The college has canteen facilities available for both staff and patients. The canteen provides a variety of delicious and nutritious food. Separate seating arrangements are made for the staff and the patients.

Canteen facilities are available till late evenings, and thus the students can avail the food of their choice whenever they need. There is a small cafeteria within the college in the first floor, which provides snacks and other refreshments for the students, patients, and staff.

Basic requirements needed for the students are also made available to the students from the store, which is situated within the hostel.

South Indian Bank branch and post office are also located within the campus, which enables easy access of the same whenever required. The bank facilities are available from 10 am in the morning till 5 pm in the evening.

The college campus is made environment friendly by safe disposal of plastic waste in separate garbage bins. The students union conduct programs like planting trees and plants during every World Environment Day that is on June 5 every year. The palm trees in the college are the shelter for beautiful parrots and other birds. Many varieties of doves, love birds, etc. are also nurtured.

The road leading to the college is well tarred and sign boards are also established which lead to the boys and girls hostel, canteen, and also in every floor of the college which shows way to various departments and other laboratories. The college is guarded by about 5-6 security guards, who work in shifts, day and night.

Water purification systems are also available in the college campus, which provide easy access to safe drinking water.

File Description	Document
Link for any other relevant information	View Document
Link for photographs/ Geotagging of Campus facilities	View Document

4.1.4 Average percentage of expenditure incurred, excluding salary, for infrastructure development and augmentation during the last five years**Response:** 42.794.1.4.1 *Expenditure incurred, excluding salary, for infrastructure development and augmentation year-wise during the last five years (INR in lakhs)*

2020-21	2019-20	2018-19	2017-18	2016-17
213.4038	74.22629	74.37786	37.75	98.0108

File Description	Document
Institutional data in prescribed format	View Document
Audited utilization statements (highlight relevant items)	View Document
Link for additional information	View Document

4.2 Clinical, Equipment and Laboratory Learning Resources**4.2.1 Teaching Hospital, equipment, clinical teaching-learning and laboratory facilities are as stipulated by the respective Regulatory Bodies****Response:**

Pushpagiri College of Dental Sciences is a premier dental teaching hospital in South Kerala. This is the sole dental college, located in the Pathnamthitta district of Kerala. The college has the following departments:

- Department of Oral medicine and radiology
- Department of Oral and Maxillofacial Surgery(OMFS)
- Department of Pedodontics
- Department of Public health dentistry
- Department of Periodontics
- Department of Orthodontics
- Department of Prosthodontics

- Department of Conservative Dentistry
- Department of Oral and Maxillofacial Pathology

All the departments are well equipped with adequate requirements as per DCI stipulations for clinical training of the UG and PG students in various aspects of dentistry as per DCI and KUHS guidelines.

Full-fledged preclinical labs with simulative teaching facilities are available for Orthodontics, Prosthodontics, Dental materials and Conservative dentistry. Oral and Maxillofacial Pathology department is equipped with lab facilities for dental anatomy, oral histology and oral pathology. All PG departments have seminar rooms and all departments have computer with wifi facility. Four lecture halls are available for theory classes.

There are 2 examination halls with surveillance cameras as per KUHS guidelines on the 7th floor. The college has a main library on the 7th floor and department libraries in all the departments. The main library has a wide collection of books and journals on the various dental subjects and general subjects and previous year examination question papers for both UG and PG students. There is a huge collection for borrowing along with the reference sections. The Department libraries are

equipped with subject relevant key textbooks and journals for referencing in the department. Reference sections are also available. Computers with wifi facility are available in the main library and in all departments for research and learning activity of students.

Pushpagiri College of Dental Sciences started in the year 2006 with an annual intake of 50 BDS students. The Department of Health & Family Welfare, Government of India, through the Dental Council of India, recognized this institution. The College was initially affiliated to the Mahatma Gandhi University, Kottayam, Kerala. From the year 2010 the fresh BDS batches were affiliated to the Kerala University of Health Sciences, Thrissur, Kerala. The MDS courses in the college began in the year 2013 for the departments OMFS, Periodontics and Prosthodontics. Following which in the year 2014, PG admissions in department of Orthodontics and Conservative Dentistry had begun. MDS course in the department of Pedodontics began in the year 2019. The DORA course began in the year 2019 with an annual intake of 10 students.

There are certain specialized clinics and facilities in the college in which faculty and students from various departments collaborate to meet the treatment needs of the concerned patients. These include:

- Priority Clinic
- Department of Implantology
- Tobacco cessation clinic
- Special health care needs clinic
- Conscious Sedation Clinic
- Geriatric Clinic

- TMJ Clinic

File Description	Document
Link for any other relevant information	View Document
Link for the facilities as per the stipulations of the respective Regulatory Bodies with Geotagging	View Document
Link for the list of facilities available for patient care, teaching-learning and research	View Document

4.2.2 Average number of patients per year treated as outpatients and inpatients in the teaching hospital for the last five years

Response: 55785.6

4.2.2.1 Number of patients treated as outpatients in the teaching hospital year-wise during the last five years.

2020-21	2019-20	2018-19	2017-18	2016-17
33480	61411	57534	62400	62860

4.2.2.2 Number of patients treated as inpatients in the teaching hospital year-wise during the last five years.

2020-21	2019-20	2018-19	2017-18	2016-17
108	236	260	283	356

File Description	Document
Year-wise outpatient and inpatient statistics for the last 5 years	View Document
Institutional data in prescribed format	View Document
Details of the teaching hospitals (attached hospital or shared hospitals after due approval by the Regulatory Council / University) where the students receive their clinical training	View Document

4.2.3 Average number of students per year exposed to learning resource such as Laboratories, Animal House & Herbal Garden during the last five years.

Response: 197.2

4.2.3.1 Number of UG students exposed to learning resource such as Laboratories, Animal House & Herbal Garden year-wise during the last five years.

2020-21	2019-20	2018-19	2017-18	2016-17
148	166	168	170	156

4.2.3.2 Number of PG students exposed to learning resource such as Laboratories, Animal House & Herbal Garden year-wise during the last five years.

2020-21	2019-20	2018-19	2017-18	2016-17
39	37	34	34	34

File Description	Document
Number of UG, PG students exposed to Laboratories, Animal House and Herbal Garden (in house OR hired) per year based on time-table and attendance	View Document
Institutional data in prescribed format	View Document
Details of the Laboratories, Animal House and Herbal Garden	View Document
Detailed report of activities and list of students benefitted due to exposure to learning resource	View Document
Link for additional information	View Document

4.2.4 Availability of infrastructure for community based learning Institution has:

1. Attached Satellite Primary Health Center/s
2. Attached Rural Health Center/s other than College teaching hospital available for training of students
3. Residential facility for students / trainees at the above peripheral health centers / hospitals
4. Mobile clinical service facilities to reach remote rural locations

Response: B. Any three of the above

File Description	Document
Institutional prescribed format	View Document
Any additional information	View Document
Link for additional information	View Document

4.3 Library as a Learning Resource

4.3.1 Library is automated using Integrated Library Management System (ILMS)

Response:

Library Software: LIBSOFT

Automation: Partial

Completion of automation: 2007

1. ABOUT LIBSOFT

Libsoft is an integrated, multi-user, user-friendly Library Management Software Package

Developed with the help and advice of a team of experts from library profession. This software can manage all library routines like book accession, multimedia accession, journal accession & indexing, classification based on DDC, membership, circulation and Information Retrieval

(OPAC). This software is systematically checked with various working conditions.

1.1. Features

- Fully Flexible-Local variations possible
- Supports more than 10 Lakh of Records
- Data conversion from CDS/ISIS
- Reduced Rate
- Fully Integrated
- High Data Security
- Exhaustive Information Retrieval Tool
- More User-Friendly

- Printouts in desired formats
- Various report generation
- Simple and Boolean search
- Search result can sort with all fields
- Multi-user Facility
- Network Implementation
- Software Consistency
- Barcode Facility
- ISBN support for Book Accession
- Member Photo support
- Title reservation

File Description	Document
Link for geotagged photographs of library facilities	View Document
Link for any other relevant information	View Document

4.3.2 Total number of textbooks, reference volumes, journals, collection of rare books, manuscripts, Digitalized traditional manuscripts, Discipline-specific learning resources from ancient Indian languages, special reports or any other knowledge resource for library enrichment

Response:

Total number of books: 4484

Total number of titles: 2016

Total number of Reference volumes: 940

Total number of journals: 49

International Journals: 40

National Journals: 9

Collection of rare books: Nil

Manuscripts: Nil

Digitalized traditional manuscripts: Nil

Data Requirement for the Last Five Years:**TOTAL NO.OF BOOKS**

SL.No.	Date & Year	Accession No	Total No. of Titles	Total No. of
1	JAN.2017-DEC.2017	04238-04262	19	25
2	JAN.2018-DEC.2018	04263-04325	48	63
3	JAN.2019-DEC.2019	04326-04456	61	131
4	JAN.2020-DEC.2020	04457-04484	25	28

TOTAL NO.OF JOURNALS

Sl. No.	Year	Total no. of journal	International	National
1	2017	14	11	3
2	2018	7	5	2
3	2019	23	21	2
4	2020	6	4	2
5	2021			

LIST OF JOURNALS (BOUND VOLUMES)**INTERNATIONAL**

SL.NO	TITLE		YEA
1	JOURNAL OF PERIODONTOLOGY	WILEY- BLACKWELL	2000
2	JOURNAL OF CLINICAL PERIODONTOLOGY	WILEY- BLACKWELL	2002
3	INTERNATIONAL JOURNAL OF PERIODONTICS & RESTORATIVE DENTISTRY	QUINTESENCE	2001
4	JOURNAL OF ORAL IMPLANTOLOGY	AMERICAN ACADEMY OF IMPLANT DENTISTRY	2000
5	PERIODONTOLOGY 2000	WILEY- BLACKWELL	2000
	JOURNAL OF PERIODONTAL RESEARCH	WILEY- BLACKWELL	
6	INTERNATIONAL JOURNAL OF PROSTHODONTICS	QUINTESENCE	2002
7	JOURNAL OF PROSTHODONTICS(28)	WILEY- BLACKWELL	2000
8	JOURNAL OF PROSTHETIC DENTISTRY	ELSEVIER	2013
9	INTERNATIONAL JOURNAL OF PROSTHODONTICS & RESTORATIVE DENTISTRY		2013
10	JOURNAL OF PROSTHODONTIC RESEARCH	ELSEVIER	2013
11	ORAL ONCOLOGY	PERGAMON PRESS - AN IMPRINT OF ELSEVIER SCIENCE	2010
12	JOURNAL OF ORAL AND MAXILLOFACIAL SURGERY	AMERICAN ASSOCIATION OF ORAL AND MAXILLOFACIAL SURGEONS	2000
13	ORAL SURGERY, ORAL MEDICINE, ORAL PATHOLOGY, ORAL RADIOLOGY	ELSEVIER	2000
14	JOURNAL OF CRANIO MAXILLOFACIAL SURGERY	ELSEVIER	2000
15	BRITISH JOURNAL OF ORAL AND MAXILLOFACIAL SURGERY	ELSEVIER	2013
16	INTERNATIONAL JOURNAL OF ORAL AND MAXILLOFACIAL SURGERY	ELSEVIER	2013
17	ORAL & MAXILLOFACIAL CLINICS OF NORTH	ELSEVIER	2016

	AMERICA		
18	INTERNATIONAL ENDODONTIC JOURNAL	WILEY BLACK WELL	2000
19	JOURNAL OF ESTHETIC AND RESTORATIVE DENTISTRY	WILEY BLACK WELL	2000
20	DENTAL MATERIALS(43)	WILEY BLACK WELL	2000
21	DENTAL TRAUMATOLOGY	WILEY BLACK WELL	2000 2010
22	OPERATIVE DENTISTRY	ACADEMY OF OPERATIVE DENTISTRY	2013
23	JOURNAL OF ENDODONTICS	AMERICAN ASSOCIATION OF ENDODONTICS	2013
24	AMERICAN JOURNAL OF ORTHODONTICS & DENTOFACIAL ORTHOPEDICS	AMERICAN ASSOCIATION OF ORTHODONTISTS	2002 2013
25	JOURNAL OF CLINICAL ORTHODONTICS	JOURNAL OF CLINICAL ORTHODONTICS INC	2000 2013
26	SEMINARS IN ORTHODONTICS	ELSEVIER	2002 2013

File Description	Document
Link for any other relevant information	View Document
Link for geotagged photographs of library ambiance	View Document
Link for data on acquisition of books / journals /Manuscripts / ancient books etc., in the library.	View Document

4.3.3 Does the Institution have an e-Library with membership / registration for the following: 1. e – journals / e-books consortia 2. E-Shodh Sindhu 3. Shodhganga 4. SWAYAM 5. Discipline-specific Databases

Response: E. Any one of the above

File Description	Document
Institutional data in prescribed sormat	View Document
E-copy of subscription letter/member ship letter or related document with the mention of year	View Document
Link for additional information	View Document

4.3.4 Average annual expenditure for the purchase of books and journals including e-journals during the last five years

Response: 11.31

4.3.4.1 Annual expenditure for the purchase of books and journals including e-journals year-wise during last five years (INR in Lakhs)

2020-21	2019-20	2018-19	2017-18	2016-17
5.79155	19.21269	11.74818	4.73708	15.06890

File Description	Document
Provide consolidated extract of expenditure for purchase of books and journals during the last five years duly attested by Chartered Accountant and Head of the institution	View Document
Proceedings of library Committee meeting for allocation of fund and utilization of fund for purchase of books and journals	View Document
Institutional data in prescribed format	View Document
Audit statement highlighting the expenditure for purchase of books and journal library resources	View Document
Links for additional information	View Document

4.3.5 In-person and remote access usage of library and the learner sessions/library usage programmes organized for the teachers and students

Response:

Central library has a total of 4586 books and 2038 titles. Library is partially automated with LIBSOFT Software. Reading list/ Bibliography compilation is available through OPACS.

Users can access eBook and e-journals through EBSCO host online services. Through EBSCO HOST (online research database) the students and faculty can access full-text of e-journals in dental sciences. Online journals are available through www.search.ebscohost.com

Apart from this students and faculty members can make use of all the services in the library during normal working hours. The library has a total of 9 computers for general access. Question papers of various universities like Kerala university, Mahatma Gandhi University, Kerala University of Health Science, Rajeev Gandhi university of Health Science, Annamalai University, Tamil Nadu Dr. MGR Medical university etc.. are available for all subjects of Post Graduate and Under Graduate courses in the library.

Library has an Advisory Committee. The composition of the committee includes

1. Principal
2. Vice Principals
3. Representatives from each department
4. Staff in charge of the library
5. Librarian
6. Finance officer

The committee periodically reviews the requirements of the library. It takes inputs from various departments and from students. The committee puts forwards its recommendations to the college authorities regarding the number and title of the new books, journals and other holding to be purchased for the library. The committee also looks in to the physical changes needed in the library to make it user friendly. The committee had recommended the need for a separate computer section, Audio visual room and journal room for the library. These recommendations were implemented by the institution

Details regarding Central Library

Total area of the library is 441.88 sq m

Total seating capacity of the library is 250

Working hours is 8 am to 8 pm. on Monday to Saturday

Layout of the Central library includes

1. Circulation Section
2. Under Graduate Reading room
3. Librarian Room

4. Photocopy Area
5. Property Counter
6. Post Graduate Reading room
7. Staff reading room
8. E- Library
9. Journal room
10. Audio – Visual Room
11. Book Processing Area
12. Reference Book Section

File Description	Document
Link for any other relevant information	View Document
Link for details of learner sessions / Library user programmes organized	View Document
Link for details of library usage by teachers and students	View Document

4.3.6 E-content resources used by teachers: 1. NMEICT / NPTEL 2. other MOOCs platforms 3. SWAYAM 4. Institutional LMS 5. e-PG-Pathshala

Response: Any One of the above

File Description	Document
Institutional data in prescribed format	View Document
Give links e_content repository used by the teachers	View Document

4.4 IT Infrastructure

4.4.1 Percentage of classrooms, seminar halls and demonstration rooms linked with internet /Wi-Fi-enabled ICT facilities (data for the preceding academic year)

Response: 73.33

4.4.1.1 Number of classrooms, seminar halls and demonstration rooms linked with internet /Wi-Fi enabled ICT facilities

Response: 11

4.4.1.2 Total number of classrooms, seminar halls and demonstration room in the institution

Response: 15

File Description	Document
Institutional data in prescribed format	View Document
Geo-tagged photos	View Document
Consolidated list duly certified by the Head of the institution	View Document
Links to additional information	View Document

4.4.2 Institution frequently updates its IT facilities and computer availability for students including Wi-Fi

Response:

Pushpagiri college of dental sciences embraces IT facilities for its students such that they can utilize these resources to explore their potential to the fullest . To enable this, the college frequently updates its IT facilities across the campus including lecture halls , seminar halls and departments to name a few.

All the four lecture halls are well equipped with WP 220 PA amplifier set with microphone VM 22H , ceiling mount kit ,camera surveillance in lecture hall 1 (HIK IP 2MP MINI BULLET D S2CD1023GOE-1) being yet another feature to monitor the hall activities. Council hall in level 1 is also well equipped with an EPSON EBS41 LCD projector . Ceiling mounted kits are made available to all the seminar halls too. Other facilities include CCTV surveillance monitoring system, college punching system, scanning and printing etc.

The college wants all its students and faculty members to be well versed with modern learning aids and hence all the departments are WiFi enabled . Students and staff members make extensive use of these facilities , be it for online classes or for Zoom meetings. All these help in smooth sailing of the academic sessions during the lockdown days. These resources are not only restricted to academics, contents pertaining to extra curricular activities and various informative sessions of interest are also made available.

At level 1 wifi facility can be accessed in the Principal's office (access point) and Dept. of OMR(TP LINK ARCHER C6 ROUTER AC1202) . ROUTER AC1200 and 1203 are installed in the IT Medicity section and dept. of OMFS on level 2 respectively. At level 3 dept. of Pedodontics is provided with TP LINK ARCHER C6 ROUTER AC1204, ROUTER 1205 at dept. of Orthodontics and ROUTER 1206 in dept. of Periodontics at level 4 .Level 5 wifi facilities can be accessed from dept. of Endodontics and dept.of Prosthodontics provided with ROUTERS 1207 and 1208 respectively. ROUTER AC 1201 is accessible to dept. of Oral pathology. All of these being extremely useful for the various conferences held including the

OOO Conference.

All these facilities have paved the way for making Pushpagiri college of dental sciences the finest in the state. Each and every faculty member and students have made the best of these facilities to emerge in flying colours in all the past academic records.

File Description	Document
Link for documents related to updation of IT and Wi-Fi facilities	View Document
Link for any other relevant information	View Document

4.4.3 Available bandwidth of internet connection in the Institution (Lease line)

Response: 50 MBPS-250 MBPS

File Description	Document
Institutional data in prescribed format	View Document
Details of available bandwidth of internet connection in the Institution	View Document
Bills for any one month of the last completed academic year indicating internet connection plan, speed and bandwidth	View Document

4.5 Maintenance of Campus Infrastructure

4.5.1 Average Expenditure incurred on maintenance of physical facilities and academic support facilities excluding salary component, as a percentage during the last five years

Response: 1.89

4.5.1.1 Expenditure incurred on maintenance of physical facilities and academic support facilities excluding salary component year-wise during the last five years (INR in lakhs)

2020-21	2019-20	2018-19	2017-18	2016-17
9.98	4.401	3.8229	2.12	1.89880

File Description	Document
Provide extract of expenditure incurred on maintenance of physical facilities and academic support facilities duly certified by Chartered Accountant and the Head of the institution	View Document
Institutional data in prescribed format	View Document
Link for any additional information	View Document

4.5.2 There are established systems and procedures for maintaining and utilizing physical, academic and support facilities - laboratory, library, sports facilities, computers, classrooms etc.

Response:

There are well defined systems and procedures for maintaining and utilizing physical, academic and support facilities- clinical equipment , classrooms, laboratory, library ,emergency maintenance, sports , computers etc. The College has an established policy and system in place for the maintenance and utilization of all its physical and academic facilities.

Clinical equipment management:

In order to maintain the Lab equipment of various departments, Stock registers and log books are maintained. Entries relating to the repairs and maintenance of these equipment are entered in this complaint register. In the year 2020, a WhatsApp group is created for entering the complaints of the equipment. Equipment complaints are entered in the WhatsApp group for immediate attention. Maintenance of the equipment are done immediately after entering.

Classroom management:

As far as academics is concerned, classroom being the most important work space, it is managed with proper systems and procedures as instructed by the Management and the University. The classrooms are well equipped with all modern technology like the LCD projector, mike systems, and other technologies for better and effective teaching. CCTVs installed in each classroom to make sure of the safety and the security.

Laboratory

The Laboratory policy forms the core in the working of the institution. Laboratory has several instruments and equipment. Locations of laboratory and fire extinguishers help to assure protective measures to minimize the causalities.

Library

The library allows, all bonafide students have an open access to a wide range of library resources which include books, journals, CDs and E-resources. Students can refer to these resources to acquire knowledge in various courses that they study. It also has resources for personality development, sports, career guidance, competitive exams, etc.,For the maximum usage of library the postgraduate students are allotted with library hours. It is mandatory for the students and staff of the college to have a Library Card.

Emergency Maintenance

The emergency maintenance like replacing bulbs/tube lights, repairing of water taps, cleaning of blocked drains, etc. are taken care of by the multi-tasking staff.

Sports

Sports committee looks after maintaining the sports ground and sports equipment. Committee organizes various indoor and outdoor sports competitions for students at intra and intercollegiate level.

Computers

Maintenance of computers (Hardware and Software), updating software related to administrative and overall maintenance of campus infrastructure. Annual maintenance contracts for computers, copier machines, software, CCTV, Fire extinguisher, garden, security are in place

Institution follows all safety and security norms as required for an educational institution and makes optimal use of all security mechanisms. Safety of girls is specially handled and appropriate measures are taken to make the campus safe for students.

File Description	Document
Link for minutes of the meetings of the Maintenance Committee	View Document
Link for log book or other records regarding maintenance works	View Document
Link for any other relevant information	View Document

Criterion 5 - Student Support and Progression

5.1 Student Support

5.1.1 Average percentage of students benefited by scholarships /freeships / fee-waivers by Government / Non-Governmental agencies / Institution during the last five years

Response: 9.78

5.1.1.1 Number of students benefited by scholarships and free ships provided by the institution, Government and non-government bodies, industries, individuals, philanthropists during the last five years (other than students receiving scholarships under the government schemes for reserved categories)

2020-21	2019-20	2018-19	2017-18	2016-17
38	35	38	37	29

File Description	Document
List of students who received scholarships/freeships /fee-waivers	View Document
Institutional data in prescribed format	View Document
Attested copies of the sanction letters from the sanctioning authorities	View Document

5.1.2 Capability enhancement and development schemes employed by the Institution for students: 1. Soft skill development 2. Language and communication skill development 3. Yoga and wellness 4. Analytical skill development 5. Human value development 6. Personality and professional development 7. Employability skill development

Response: C. Any three of the above

File Description	Document
Institutional data in prescribed format	View Document
Detailed report of the Capacity enhancement programs and other skill development schemes	View Document
Link to Institutional website	View Document
Link for additional information	View Document

5.1.3 Average percentage of students provided training and guidance for competitive examinations and career counseling offered by the Institution during the last five years

Response: 5.02

5.1.3.1 Number of students benefitted by guidance for competitive examinations and career counseling offered by the Institution in a year

2020-21	2019-20	2018-19	2017-18	2016-17
15	13	23	20	20

File Description	Document
Year-wise list of students attending each of these schemes signed by competent authority	View Document
Institutional data in prescribed format	View Document
Link for institutional website. Web link to particular program or scheme mentioned in the metric	View Document

5.1.4 The Institution has an active international student cell to facilitate study in India program etc.,**Response:**

The Pushpagiri College of Dental Sciences does not have an active international student cell to facilitate study in India program. Although there is a Non-Resident Indian (NRI) quota the Kerala University of Health Sciences does not permit the admission of students under Foreign National (FN) quota in that category

As per the norms of Dental Council of India, Kerala University of Health Sciences and the Government of Kerala the institution does not have the permission to admit international students nor exchange students from other national/international universities/ institutions.

File Description	Document
Link for international student cell	View Document

5.1.5 The institution has a transparent mechanism for timely redressal of student grievances / prevention of sexual harassment and prevention of ragging

1. Adoption of guidelines of Regulatory bodies
2. Presence of the committee and mechanism of receiving student grievances (online/ offline)
3. Periodic meetings of the committee with minutes
4. Record of action taken

Response: All of the above

File Description	Document
Minutes of the meetings of student Grievance Redressal Committee and Anti-Ragging Committee/Cell	View Document
Institutional data in prescribed format	View Document
Circular/web-link/ committee report justifying the objective of the metric	View Document
Link for Additional Information	View Document

5.2 Student Progression

5.2.1 Average percentage of students qualifying in state/ national/ international level examinations during the last five years
(eg:GATE/AICTE/GMAT/GPAT/CAT/NEET/GRE/TOEFL/PLAB/USMLE/AYUSH/Civil Services/Defence/UPSC/State government examinations/ AIIMSPGET, JIPMER Entrance Test, PGIMER Entrance Test etc.,)

Response: 59.15

5.2.1.1 Number of students qualifying in state/ national/ international level examinations (eg: GATE/AICTE/GMAT/ GPAT/CAT/NEET/ GRE/TOEFL/ PLAB/USMLE/AYUSH/Civil Services/Defence/ UPSC/State government examinations/ AIIMSPGET, JIPMER Entrance Test, PGIMER Entrance Test etc.,) year-wise during the last five years ..

2020-21	2019-20	2018-19	2017-18	2016-17
11	18	12	8	19

5.2.1.2 Number of students appearing in state/ national/ international level examinations (eg:GATE/AICTE/GMAT/CAT/NEET/GRE/ TOEFL/ PLAB/ USMLE/AYUSH/Civil Services/Defence/UPSC/ State government examinations / AIIMSPGET, JIPMER Entrance Test, PGIMER Entrance Test etc.,) **during the last five years**

2020-21	2019-20	2018-19	2017-18	2016-17
18	25	21	20	29

File Description	Document
Scanned copy of pass Certificates of the examination	View Document
Institutional data in prescribed format	View Document

5.2.2 Average percentage of placement / self-employment in professional services of outgoing students during the last five years

Response: 1.56

5.2.2.1 Number of outgoing students who got placed / self-employed year- wise during the last five years

2020-21	2019-20	2018-19	2017-18	2016-17
0	0	0	2	3

File Description	Document
Institutional data in prescribed format	View Document
In case of self-employed professional services registration with MCI and documents for registered clinical Practitioner should be provided	View Document
Any additional information	View Document

5.2.3 Percentage of the batch of graduated students of the preceding year, who have progressed to higher education

Response: 62.5

5.2.3.1 Number of last batch of graduated students who have progressed to higher education

Response: 10

File Description	Document
Institutional data in prescribed format	View Document
Any proof of admission to higher education	View Document

5.3 Student Participation and Activities

5.3.1 Number of awards/medals for outstanding performance in sports/cultural activities at State/Regional (zonal)/ National / International levels (award for a team event should be counted as

one) during the last five years.

Response: 10

5.3.1.1 Number of awards/medals for outstanding performance in sports/cultural activities at State/Regional (zonal)/National / International levels (award for a team event should be counted as one) year-wise during the last five years .

2020-21	2019-20	2018-19	2017-18	2016-17
0	8	0	2	0

File Description	Document
Institutional data in prescribed format	View Document
Any additional information	View Document
Link for Additional Information	View Document
Duly certified e-copies of award letters and certificates	View Document

Other Upload Files

1	View Document
---	-------------------------------

5.3.2 Presence of a Student Council, its activities related to student welfare and student representation in academic & administrative bodies/ committees of the Institution

Response:

The student's council for the college is elected every year like conducting elections in the college auditorium. The chairman and general secretary position holders are elected from the final year part 2 students while the other position holders like sports secretary ,arts secretary ,UUC ,editor ,treasurer and many more are elected from all other batches. The batch representatives also will be a part of the council for that year.

The student's council being part and parcel of the institution is the backbone of all the student welfare activities being conducted in the college. The college arts fest, college day, sports day and all other major celebrations throughout the year is being conducted by the student's council with the support of the entire student community. The council contributions for the NSS activities, blood bank functioning, green club functioning and much more to add in the list are worth commendable.

The graduation ceremony is being held every year embarks the hard work put in by each and every member in the council. Furthermore the contributions of the council members to organize the induction ceremonies and the orientation programs for the fresher's conducted every year also cannot be neglected. Movie club started by the council adds another feather in the success story of the council functioning.

This venture was whole heartedly accepted among the students and received much appreciation.

The student's council not only focuses on the student welfare but also take initiative for the welfare of the public in and around college. The old age home visits conducted every year, flood relief fund raising, public awareness programs all points to the above said. In the lockdown days too the council didn't abandon their works. The arts fest, environment day celebration, teachers day celebration, onam celebration are just a few to mention in the programs conducted virtually. The involvement of the

student's council in the reopening of the college for students and interns amidst the pandemic cannot be neglected. This initiative taken by the council saved a year for the young budding dentists. The council never restricted their activities for the students inside the college but also ensured their voices to be heard and their active participation in all the intercollege fests and their queries being raised in the University Union Council. The student body have its representatives in the parent teacher association and in the Student Support and Progression Committee (SSPC) to ensure the welfare of the student community. In short, the student's council act as the strength and support system of the Pushpagiri Students Family.

File Description	Document
Link for reports on the student council activities	View Document
Link for any other relevant information	View Document

5.3.3 Average number of sports and cultural activities/competitions organised by the Institution during the last five years

Response: 0.6

5.3.3.1 Number of sports and cultural activities/competitions organised by the Institution year-wise during the last five years

2020-21	2019-20	2018-19	2017-18	2016-17
0	2	0	1	0

File Description	Document
Institutional data in prescribed format	View Document
Link for Additional Information	View Document

5.4 Alumni Engagement

5.4.1 The Alumni Association is registered and holds regular meetings to plan its involvement and

developmental activates with the support of the college during the last five years.

Response:

Our college started an alumni association in the 2016 named ESPERANZA, in which all the previous year pass out students of Pcds were included. And we were allowed to discuss and share their opinions on the various events conducted in the college. The different view point of all the previous students of the college and the currently studying students enhanced the program. The alumni association aims to promote and foster mutually beneficial interaction between the alumni and present students of Pushpagiri College of Dental Science and to encourage the formation of regional chapters as a means to increase participation of alumni. It also to organize and establish scholarship funds to the needy and deserving students of Pushpagiri College of Dental Sciences. On the behalf of which the students were allowed to bring potential in their curriculum activities. The alumni association conducted various competitions for students during the calendar year. With the beginning of the alumni association we had a poster competition on Teachers day celebration. Various competitions are conducted for both teaching staff and students. On the occasion of the world heart day we had conducted a rally on the awareness of heart diseases. As a part of world's students day celebration on October 1st, a flash mob was conducted. The department of paediatric and preventive dentistry took the initiative for conducting children's day celebration in a grand way. Children's day celebration began a week prior to it in which the students and kids indulge themselves in various competitions. An awareness talk program was conducted on February 4th as a part of world cancer day. As a part of dentist day celebration on March 6, a tableau competition and a quiz competition was conducted for students. On behalf of environmental day celebration on June 5, all the students got together and planted saplings in the college campus and in their hostels also. We made a resolution for not to use plastic within the campus. The Esperanza alumni association always gathered together to conduct any event whether it be a poster competition on teachers day enlightening the impact they have on our lives or the awareness rally on world heart day I Pcds alumni has always been together through all the ups and downs.

File Description	Document
Any additional information	View Document
Link for frequency of meetings of Alumni Association with minutes	View Document
Link for details of Alumni Association activities	View Document
Link for audited statement of accounts of the Alumni Association	View Document
Lin for quantum of financial contribution	View Document
Link for Additional Information	View Document

5.4.2 Provide the areas of contribution by the Alumni Association / chapters during the last five years

- 1. Financial / kind**
- 2. Donation of books /Journals/ volumes**

- 3.Students placement
- 4.Student exchanges
- 5.Institutional endowments

Response: E. Any one of the above

File Description	Document
Link for Additional Information	View Document



Criterion 6 - Governance, Leadership and Management

6.1 Institutional Vision and Leadership

6.1.1 The Institution has clearly stated vision and mission which are reflected in its academic and administrative governance.

Response:

The mission and vision statements of the institution are clearly defined and are translated into its various academic and administrative activities. It aims to provide a truly outstanding private educational experience for students which encompass global trends in their chosen field of education through a student centric approach in teaching, fostering higher levels of learning; critical thinking and evidence-based health care capabilities, without compromising on the charitable nature of the institution. The institution strives to instill and nurture strict professionalism and competency based on catholic values and compassion for fellow human beings.

Meetings as per the various criteria of NAAC are held to ensure all-round development of the college. Meetings at various levels of the authority are conducted during various intervals. At the governing body level Director board meeting and executive committees are held. Director Board meetings are conducted once a week . Executive Committee meetings are conducted once a month.

The college council comprises of the CEO, Director Academics & Research, Director (Pushpagiri College of Dental Sciences), Principal (who is the chairman of the CCM), Vice Principals, Heads of the Departments and Faculty up to Reader Level. The College Council provides a platform for interaction of management and senior faculty. College Council meets regularly at the end of every month thereby ensuring continuous monitoring of activities related to the functioning of the college. College council meetings are conducted once a month.

Staff meeting are conducted for all teaching and nonteaching staff once in six months.

Feed backs are collected from various stake-holders of the institution including governing body, students , patients, parents and alumini regarding the curriculum and day to day activities of the college. A complaints /suggestions box is provided for the use of various stake holders. Parent teacher meetings , academic monitoring committee and mentorship committee meetings are held regularly for evaluating the teaching learning process. Alumni meetings are held to take feed backs and to provide a network and a platform for students to interact with their seniors.

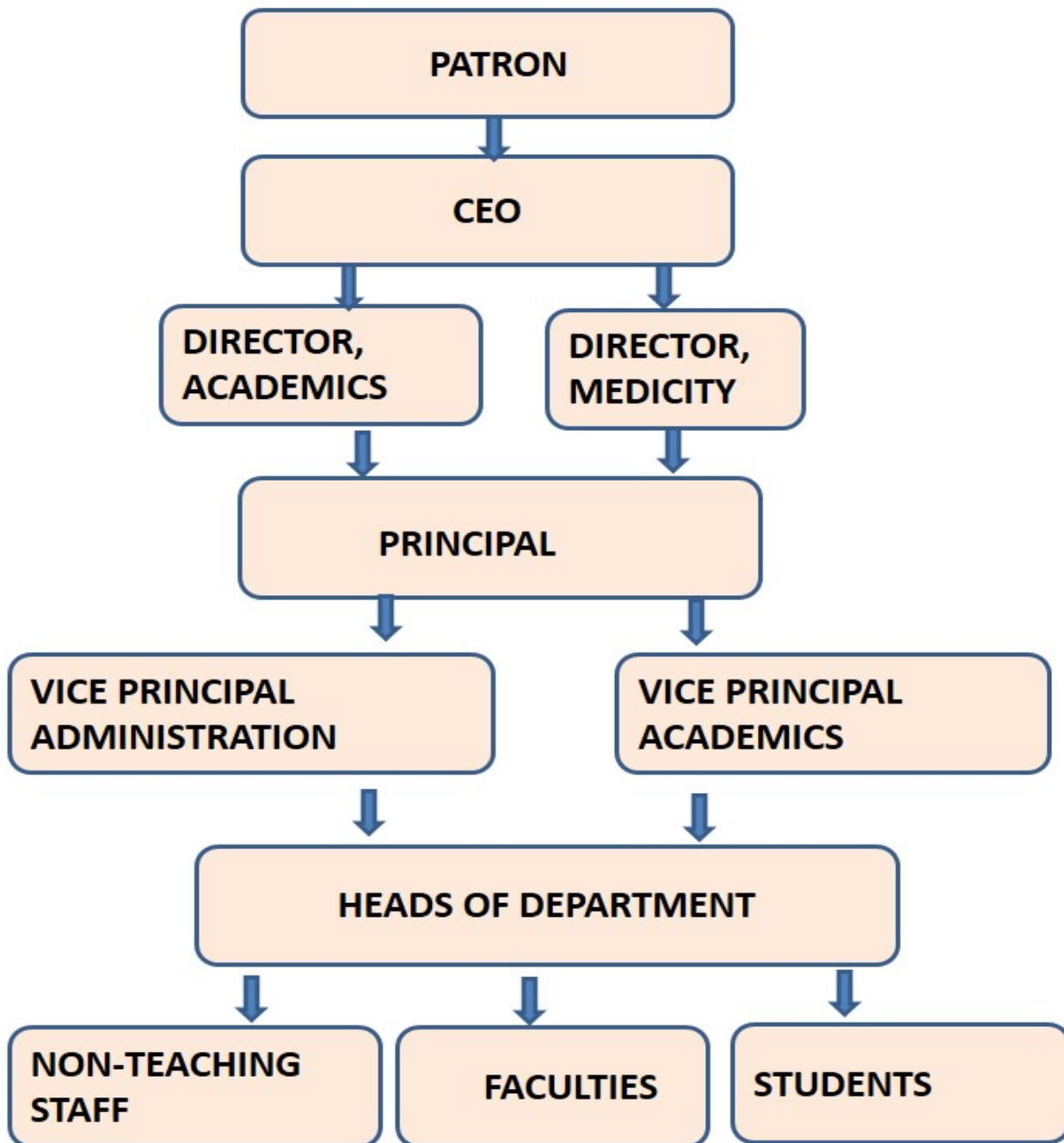
File Description	Document
Link for Vision and Mission documents approved by the College bodies	View Document
Link for additional information	View Document
Link for achievements which led to Institutional excellence	View Document

6.1.2 Effective leadership is reflected in various institutional practices such as decentralization and participative management.

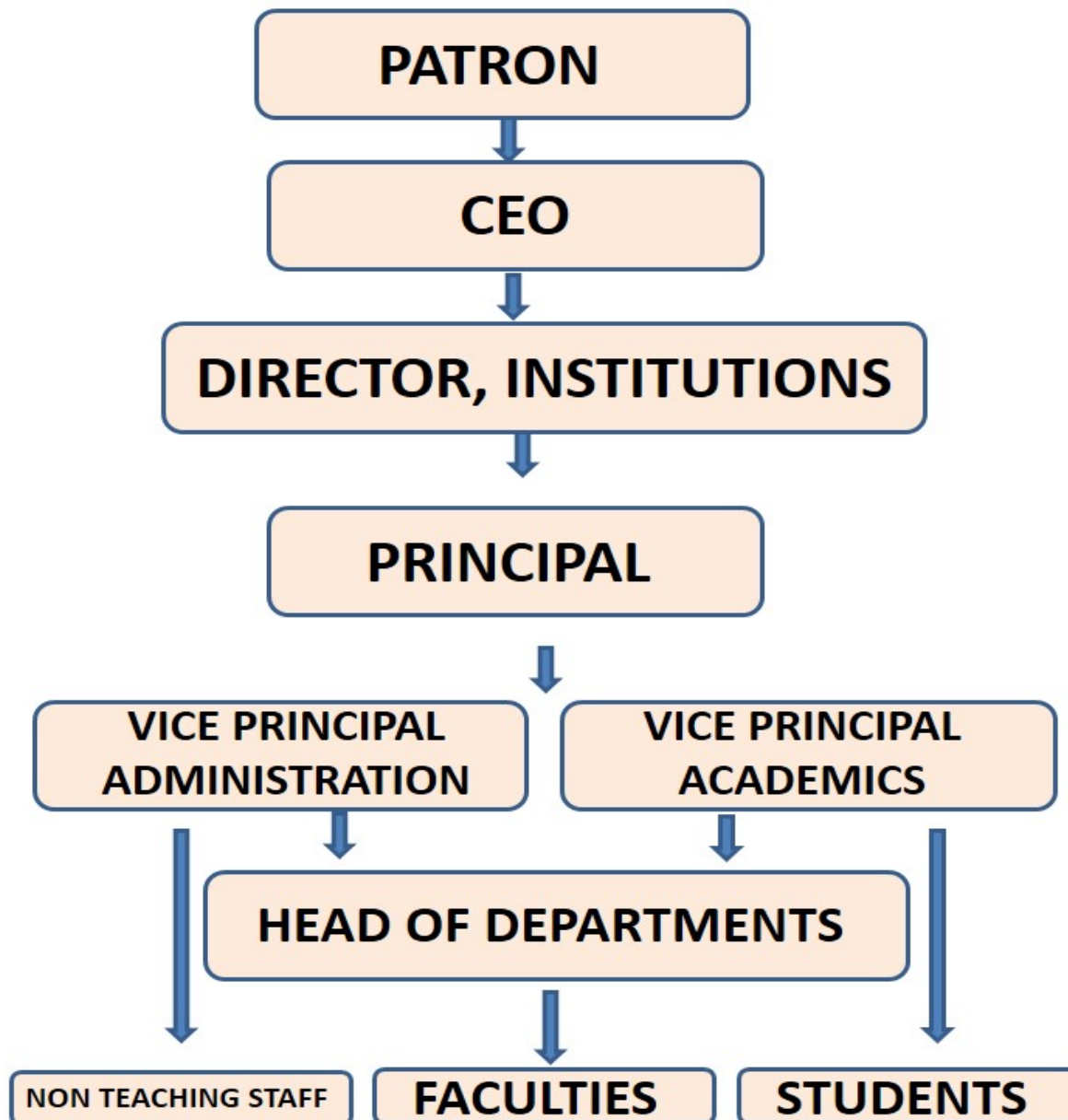
Response:

NAAC

**PUSHPAGIRI COLLEGE OF DENTAL SCIENCES
ORGANOGRAM (2016 – 2020)**



**PUSHPAGIRI COLLEGE OF DENTAL SCIENCES
ORGANOGRAM (2020 onwards)**



The routine activities of the institution are delegated down through the Director of the College, Principal, Vice Principals and Head of the Departments. The participation of various stake holders are ensured through regular meetings conducted at various levels at Head of the Departments meetings, College Council meetings, staff, parent teachers meetings, and student's union meetings and alumni meetings. The College Council comprises of the CEO, Director Institutions, Principal (who is the chairman of the CCM), Vice Principals, Heads of the Departments and Faculty up to Reader Level. The College Council provides a platform for interaction of management and senior faculty. College Council meets regularly at the end of every month thereby ensuring continuous monitoring of activities related to the functioning of the college.

Director

Director controls academic, clinical and research activities of the college. He is responsible for implementing decisions taken by various stakeholders of the institute. His duties include:

- Ensuring discipline within the Institution, campus and hostel.
- Monitoring functions institute as per guidelines as may be prescribed by the Rules and Bye-laws

The Director executes powers as delegated to him by the Director's board.

The Director calls meetings of the various academic and administrative bodies of the Institute.

PRINCIPAL

The principal carries out the following functions:

- responsible to the management for the academic activities, co-curricular, clinical and research activities of the institute
- responsible for initiating programmes for updating academic standards of the institute.
- review of the academic programmes and their progress
- responsible for the maintenance of discipline and attendance of the students.
- responsible for the formation and conduct of the various committees in the college
- to conduct regular meetings with the Faculty members and head of the departments to evaluate progress of the department and discussion regarding problems and suggestions for their problems
- he is the reporting authority for the Wardens of the Boys and Girls hostels and should ensure proper functioning of the institute

VICE PRINCIPALS

- for the administrative activities such as correspondence with the regulatory authorities
- for the academic and extracurricular activities of the students
- for the academic activities of the staff

HEADS OF DEPARTMENTS (HODs) AND THEIR FUNCTIONS

Each Department is headed by the senior most Professor of the Department with a good academic background. The HOD is selected in accordance with the rules and regulations of the regulatory body.

HOD carries out the following

- responsible to the Director Institutions and the Principal in discharging their duties and functions
- assigns duties to the staff members of the Department as per the guidelines of regulatory authority
- ensures proper discipline and academic standards within the department
- ensures maintenance of academic excellence within the department
- conducts department review meetings with the staff in the Department to assess the work done
- responsible for improving the results of the Department

Roles of the faculty in the activities of the department

Faculty in a department is called upon to play the following roles:

1. Teacher
2. Administrator
3. Researcher

File Description	Document
Link for relevant information / documents	View Document

6.2 Strategy Development and Deployment

6.2.1 The Institutional has well defined organisational structure, Statutory Bodies/committees of the College with relevant rules, norms and guidelines along with Strategic Plan effectively deployed

Response:

The highest authority is the Patron of the Pushpagiri group of institutions who also presides over a governing body which is the highest decision making authority. The CEO, Pushpagiri group of institutions is a member of the governing body- the power of policy making and final decisions rest with the governing body. The CEO presides over the eight member board of directors who are directly involved in functioning of the institutions under Pushpagiri Medical Society.

The CEO supervises the overall functioning of all the institutions under the Pushpagiri Medical Society. The Director Academics and Research overviews the academic activities recruitment of teaching faculty and oversees the promotion of the teaching faculty. The Director Finance shoulders the responsibility of financial aspects of the institution. The Director of the College manages overall activities in the campus and ensures the development of the institution in a phased manner.

Based on its vision and mission, the institution has started undergraduate and post graduate courses which have contributed to the development of world class dental health professionals capable of rendering quality dental treatment at par with global standards for the community.

The various committees involved in the functioning of the college

1. Governing Body
2. College council
3. Staff meeting
4. Infrastructure committee
5. Student Affairs committee
6. Learning Resources committee
7. Patient grievance cell
8. Purchase Committee
9. Maintenance Committee
10. PTA meeting
11. Alumni association

12. Staff and Students Greivance Cell

13. Code of Conduct Monitoring Cell

File Description	Document
Link for organisational structure	View Document
Link for minutes of the College Council/ other relevant bodies for deployment/ deliverables of the strategic plan	View Document
Link for strategic Plan document(s)	View Document

6.2.2 Implementation of e-governance in areas of operation

1. Academic Planning and Development
2. Administration
3. Finance and Accounts
4. Student Admission and Support
5. Examination

Response: A. All of the above

File Description	Document
Screen shots of user interfaces of each module Annual e-governance report approved by Governing Council/ Board of Management/ Syndicate Policy document	View Document
Policy documents	View Document
Institutional data in prescribed format	View Document

6.3 Faculty Empowerment Strategies

6.3.1 The institution has effective welfare measures for teaching and non-teaching staff

Response:

The institution gives importance and has effective welfare measures. The Institution recognizes all its employees as the most valuable resource and provides a caring and supportive working environment to all

staff which enables them to develop and optimize their full potential. However, members of staff are expected to contribute and participate effectively in achieving college mission and vision. This following table highlights on the benefits provided to the teaching and non-teaching staff of our Institution.

Teaching Staff	1. 12 days paid Medical Leave
	1. 6 months maternity leave
	1. Casual leaves in a year
	1. Annual Leaves in a year
	1. Study leave – for faculties preparing for PhD
	1. Encouraged to attend conferences / workshops / Faculty Development Programmes and training programmes every year. Conference duty leave is provided for 1 week
	1. Effective strategies to mobilize funds to support the staff and encourages them to do Minor / Major research projects.
	1. Privilege Card for medical treatments at subsidized rate
	1. Pushpagiri Medical Society
	Staff Welfare Credit Co-operative Society Ltd
	1. Pushpagiri Medical Society
	Loan Schemes & M.M.B.F & Deposits
1. Doctors consultation fee free	

	1. Celebrations of festivals in college campus
	1. Honoring all doctors for dentist day
	1. Wishing all faculties for their birthdays
Non-Teaching Staff	1. 12 days paid Medical Leave
	1. 6 months maternity leave
	1. Casual leaves in a year
	1. Annual Leaves in a year
	1. Privilege Card for medical treatments at subsidized rate
	1. Employee's State Insurance
	1. Provident Fund
	1. Rs 50,000/- for construction of house
	1. Developmental programmes for non-teaching staffs
	1. Celebration of staff birthdays and tours organized
	1. Pushpagiri Medical Society
	Staff Welfare Credit Co-operative Society Ltd

	1.Pushpagiri Medical Society
Loan Schemes & M.M.B.F & Deposits	

File Description	Document
Link for policy document on the welfare measures	View Document
Link for list of beneficiaries of welfare measures	View Document

6.3.2 Average percentage of teachers provided with financial support to attend conferences/workshops and towards membership fee of professional bodies during the last five years

Response: 0

6.3.2.1 Number of teachers provided with financial support to attend conferences / workshops and towards membership fee of professional bodies year-wise during the last five years

2020-21	2019-20	2018-19	2017-18	2016-17
0	0	0	0	0

File Description	Document
Institutional data in prescribed format	View Document

6.3.3 Average number of professional development / administrative training programmes organized by the Institution for teaching and non- teaching staff during the last five years (Continuing education programmes, entrepreneurship development programmes, Professional skill development programmes, Training programmes for administrative staff etc.,)

Response: 7

6.3.3.1 Total number of professional development / administrative training programmes organized by the Institution for teaching and non-teaching staff year-wise during the last five years

2020-21	2019-20	2018-19	2017-18	2016-17
5	6	9	9	6

File Description	Document
Institutional data in prescribed format	View Document
Link for Additional Information	View Document

6.3.4 Average percentage of teachers undergoing Faculty Development Programmes (FDP) including online programmes (Orientation / Induction Programmes, Refresher Course, Short Term Course etc.) during the last five years..

Response: 25.36

6.3.4.1 Number of teachers who have undergone Faculty Development Programmes including online programmes, Orientation / Induction Programmes, Refresher Course, Short Term Course and any other course year-wise during the last five years

2020-21	2019-20	2018-19	2017-18	2016-17
13	23	21	12	8

File Description	Document
Institutional data in prescribed format	View Document
E-copy of the certificate of the program attended by teacher	View Document
Link to additional information	View Document
Link of AQARs for the last five years	View Document

6.3.5 Institution has Performance Appraisal System for teaching and non-teaching staff

Response:

PERFORMANCE APPRAISAL SYSTEM

Pushpagiri College of Dental College follows an inbuilt systematic performance appraisal system to evaluate the employees both teaching and non-teaching staffs in a given period of time and helping them to improve their performance in the areas of inefficiency.

Performance appraisal is a regular review of employee's job performance and overall contribution to the institution. 90% weightage is given for academic performance and 10% weightage is given to personal

development. The goals are created for one academic year with qualitative and quantitative assessment and time period of completion of goals are also planned from the commencement of the academic year. The progress of the PCDS is evaluated at the middle of the year and the attainment of the goals is evaluated at the end of academic year.

A new appraisal system is formulated and implemented from the year 2021 which evaluates every aspect of a teaching faculty right from academics, co-curricular, research works and clinical works on day to day basis. This evaluation form is formulated with a motive that all works carried out by a staff in the institution has to be properly documented and appreciated.

Every aspect is given an API score system which motivates faculties for better performance. There will be an annual assessment of the appraisal system by the higher authorities.

The salient features of the performance appraisal system are as follows:

Teaching Staff

- a) The performance of each faculty member is assessed according to the Annual Self Assessment for the Performance Based Appraisal System (PBAS).
- b) Promotions are based on the PBAS proforma based on the API score.
- c) The institute undertakes a wide range of activities besides academics, for which faculty members are assigned additional duties and responsibilities, which are mostly voluntary. The Institute accords appropriate weightage for these contributions in their overall assessment.
- d) The faculty members are informed well in advance of their due promotion.
- e) The PBAS proforma filled by the Faculty Member is checked and verified by the Heads of the Departments, followed by the Vice principal, Principal, IQAC and the Director.
- f) Faculty members whose promotions are due are recommended based on their API score

Non-Teaching Staff

All non-teaching staffs are also assessed through annual confidential reports and annual performance appraisal. The various parameters for staff members are assessed under different categories i.e. Character and Habits, Departmental Abilities, Capacity to do hard work, Discipline, Reliability, Relations/Co-operation with superiors, subordinates, colleagues, students and public.

File Description	Document
Link for performance Appraisal System	View Document
Link for any other relevant information	View Document

6.4 Financial Management and Resource Mobilization

6.4.1 Institutional strategies for mobilisation of funds and the optimal utilisation of resources

Response:

The Institution has a transparent and well planned financial management system in which Government fees and Management fees received from the students are the main sources of funds. The Resource mobilization policy focuses on achieving the goals and target of the institution ensuring accountability and transparency. The harmonized Governing body coordinates and monitors the optimal utilization of the funds for the promotion of learner-centric ecosystem.

- The Institution is a centrally managed non-profit organization with honorary governing body members which ensures the income generated is spent optimally in the institution itself.
- A financial advisory body is in place to manage the managed funds. Funds are provided to meet the infrastructure requirement of the institution while starting new programmes and centres.
- The management provides financial supports to seminars/workshops/expert talks/Association activities/Faculty Development programmes.
- The extracurricular activities of the students are supported and adequate funds provided for Sports and Cultural activities.
- Scholarships to the deserving students.
- Provident fund (PF) and Employee State Insurance (ESI) benefits are provided to the Management appointed staffs.
- Financial Resources of the institution are
 - Tuition fee
 - Hostel Fee
 - Government funds-E Grantz, Merit-cum- Means Scholarship
 - Clinical Income
 - Other Income
- Tuition fee is used for the Administrative, infrastructure and academic activities.
- Government funds are optimally used for which it is sanctioned
- Transparency and accountability is ensured by conducting an annual audit of the statements

Grants and funds sanctioned by Management

- 1.The institution has a strong financial advisory board for Management of accounts and all the accounts sanctioned are audited internally as well as externally. On behalf of the Management, all daily transactions are verified by the concerned department head.
- 2.The internal audit of Management accounts is done by the internal auditors of Pushpagiri medical

society they verify all financial transactions and submit a detailed report of observations based on the observations given by internal auditor.

- The Management has appointed O Thomas & co as the external auditor of the Management accounts. At the end of every financial year they prepare annual financial statements and audit reports.

File Description	Document
Link for resource mobilization policy document duly approved by College Council/other administrative bodies	View Document
Link for procedures for optimal resource utilization	View Document

6.4.2 Institution conducts internal and external financial audits regularly

Response:

- The institution has a strong financial advisory board for Management of accounts and all the accounts sanctioned are audited internally as well as externally. On behalf of the Management, all daily transactions are verified by the concerned department head.
- The internal audit of Management accounts is done by the internal auditors of Pushpagiri medical society they verify all financial transactions and submit a detailed report of observations based on the observations given by internal auditor.
- The Management has appointed O Thomas & co as the external auditor of the Management accounts. At the end of every financial year they prepare annual financial statements and audit reports.

External audits carried out in past five years

2016-17

2017-18

2018-19

2019-20

2020-21

File Description	Document
Link for documents pertaining to internal and external audits year-wise for the last five years	View Document

6.4.3 Funds / Grants received from government/non-government bodies, individuals, philanthropists during the last five years (not covered in Criterion III)**Response:** 15.87

6.4.3.1 Total Grants received from government/non-government bodies, individuals, philanthropists year-wise during the last five years (INR in lakhs)

2020-21	2019-20	2018-19	2017-18	2016-17
0	7.87	8	0	0

File Description	Document
Institutional data in prescribed format	View Document
Copy of letter indicating the grants/funds received by respective agency as stated in metric	View Document
Link for Additional Information	View Document

6.5 Internal Quality Assurance System**6.5.1 Institution has a streamlined Internal Quality Assurance Mechanism****Response:**

Following NAAC guidelines, the college has established the Internal Quality Assurance cell (IQAC) as a post-accreditation (11-07-2016) quality sustenance measure. The IQAC of the college consists of faculty members, other staff, and students of the college and external experts from society and parents.

The academic calendar prepared every year is uploaded in the college website. The intradepartmental action plan for individual department is prepared annually under the guidance of IQAC and a report on the execution of the plans along with the minutes of periodical meetings are available with the respective HODs.

IQAC is involved in the following activities:

- coordinates the various qualitative and quantitative improvement activities of academic and administrative activities of the college.
- extends support for organizing the programs for students' progress and support services

- encourages faculties' research activities
- facilitates the process of infrastructure development of the college
- feedback analysis from various stakeholders
- facilitates the process of documentation
- prepares AQAR for submission to NAAC online
- guidance and coaching for competitive and entrance exams
- support extended for scholarships to deserving students
- support to slow learners and development of soft skills
- encourages various faculty development programmes, research activities,
- facilitates in signing MOUs with various organizations relating to academics, social awareness and outreach activities.

IQAC coordinates with the various committees of the college as per NAAC criteria

NAAC Criteria 1:

College council/ Academic / Curriculum committee

NAAC Criteria 2:

Mentorship committee

Code of conduct committee

Examination Cell

Minority & OBC cell

SC/ST Committee

Student council

Anti-Ragging Cell

Student support and Guidance cell

Students' grievances cell

DEU

Parent Teacher Association (PTA)

NAAC Criteria 3:

Institutional Ethics Committee (IEC),

Research Review Committee

NSS Committee

NAAC Criteria 4:

Patient Grievance Cell (PCC),

Student Grievance Cell

Hostel Committee,

Library Committee

IT Cell

Purchase and Maintenance committee

NAAC Criteria 5:

Student council

Anti-Ragging Cell

Student support and Guidance cell

Students' grievances cell

Alumni Committee

NAAC 6:

Infrastructure Committee/ College development committee

Learning resources committee

Academic committee

Patient Care Committee

Student Affairs

NAAC 7:

Women's Club

Staff Grievance Cell

Internal Compliance Committee

Green Club

College development committee

NAAC 8:

Infection Prevention and Control Cell

COVID Jagratha Samithi

College development committee

Purchase/ Maintenance committee

File Description	Document
Link for minutes of the IQAC meetings	View Document
Link for any other relevant information	View Document
Link for the structure and mechanism for Internal Quality Assurance	View Document

6.5.2 Average percentage of teachers attending programs/workshops/seminars specific to quality improvement in the last 5 years

Response: 0.32

6.5.2.1 Number of teachers attending programs/workshops/seminars specific to quality improvement year-wise during last five years

2020-21	2019-20	2018-19	2017-18	2016-17
0	1	0	0	0

File Description	Document
Institutional data in prescribed format	View Document
Certificate of completion/participation in programs/workshops/seminars specific to quality improvement	View Document
Link for Additional Information	View Document

6.5.3 The Institution adopts several Quality Assurance initiatives The Institution has implemented the following QA initiatives : 1. Regular meeting of Internal Quality Assurance Cell (IQAC) 2. Feedback from stakeholder collected, analysed and report submitted to college management for improvements 3. Organization of workshops, seminars, orientation on quality initiatives for teachers and administrative staff. 4. Preparation of documents for accreditation bodies (NAAC, NBA, ISO, NIRF etc.,)

Response: C.Any two of the above

File Description	Document
Minutes of the meetings of IQAC	View Document
Institutional data in prescribed format	View Document
AQAR submitted to NAAC and other applicable certification from accreditation bodies	View Document
Annual report of the College	View Document

NAAC

Criterion 7 - Institutional Values and Best Practices

7.1 Institutional Values and Social Responsibilities

7.1.1 Total number of gender equity sensitization programmes organized by the Institution during the last five years

Response: 6

7.1.1.1 Total number of gender equity sensitization programmes organized by the Institution year-wise during the last five years

2020-21	2019-20	2018-19	2017-18	2016-17
1	1	2	1	1

File Description	Document
Institutional data in prescribed format	View Document
Extract of Annual report	View Document
Copy of circular/brochure/ Report of the program	View Document

7.1.2 Measures initiated by the institution for the promotion of gender equity during the last five years.

Response:

Our institution has given prior importance in maintaining equality amongst men and women. Every effort to curb any form of gender inequality and stereotyping has been made. The female population (students, teaching and nonteaching) is more in our college are women. To this end, we have ensured that we dedicate more than adequate time and effort to organize programs that highlights and educates our faculties, students and employees about handling delicate issues and situations with clarity and professionalism. As our innate policy, we have challenged patriarchal mindsets to ensure that both boys and girls have equal access to opportunities, decision making, and freedoms. In fact, our girls are groomed to be powerful and strong professionals along with their male counterparts. Also, we ensure that specific interests, needs and priorities of girls/women and boys/men are taken into consideration. At our campus, we believe and practice that all humans are born equal and free in dignity and rights. We arrange most of the gender equity and sensitization programmes in association with the International Women's Day celebrations on the 8th of March every year.

File Description	Document
Specific facilities provided for women in terms of a. Safety and security b. Counselling c. Common Rooms d. Day care centre for young children	View Document
Link for any other relevant information	View Document
Annual gender sensitization action plan	View Document

7.1.3 The Institution has facilities for alternate sources of energy and energy conservation devices 1. Solar energy 2. Wheeling to the Grid 3. Sensor based energy conservation 4. Biogas plant 5. Use of LED bulbs/ power efficient equipment

Response: E. any one of the above

File Description	Document
Institutional data in prescribed format	View Document
Installation receipts	View Document

7.1.4 Describe the facilities in the institution for the management of the following types of degradable and non-degradable waste (within 500 words)

- **Solid waste management**
- **Liquid waste management**
- **Biomedical waste management**
- **E-waste management**
- **Waste recycling system**
- **Hazardous chemicals and radioactive waste management**

Response:

Our institution has an MOU with IMAGE for waste disposal. IMAGE, located in Palakkad, was established by the Indian Medical Association, Kerala State Branch for common biomedical waste treatment and disposal in 2003. No waste is stored in the departments of our college. At the end of each day, house keeping staff collect the segregated waste which is then collected by the collection and treatment facility away from the campus.

SOLID WASTE:

It is divided into 2 categories as per government guidelines, as wet waste and dry waste. It is then further segregated and disposed off into appropriate colour coded bags as follows: Yellow: Extracted teeth, Disposable apron, paper cup, plastic cup, jask, head cap, fractured amalgam and composite particles, acrylic material, old rpd, dentures, ortho appliances, other restorative materials, xray lead sheets and covers Red: Syringes without needles, gloves, suction tips, plastic impression material bags, orthoelastics, saline plastic bottles, hydrogen peroxide, dressing pads, IV sets, catheter, tubings, hydrogen chloride

bottles

Sharp container: Needles, scalpel blades, endofiles, ceramic crowns, metal crowns, glass, suture needles, ortho wires, ortho pins, burs, hand instruments, LA bottles, ampules, and any other glass

items.

Green: Paper Waste

Non hazardous biodegradable waste is sent for compost making and then used for gardening purposes.

LIQUID WASTE:

Liquid waste is transported through pipes and pump station to the municipal main sewage plant.

BIOMEDICAL WASTE:

Biomedical waste is segregated into appropriate colour coded bags and is then collected by

IMAGE.

E WASTE:

E waste generated is transferred to the IT cell of Pushpagiri Medical College from which it is disposed off in a suitable manner.

WASTE RECYCLING SYSTEM:

Facility not available in our campus.

HAZARDOUS CHEMICALS AND RADIOACTIVE WASTE MANAGEMENT:

Hazardous chemicals used for the purpose of disinfection and cleaning are transferred to the municipal sewage treatment plants.

File Description	Document
Link for relevant documents like agreements/MoUs with Government and other approved agencies	View Document
Link for geotagged photographs of the facilities	View Document
Link for any other relevant information	View Document

7.1.5 Water conservation facilities available in the Institution:

1. Rain water harvesting
2. Borewell /Open well recharge
3. Construction of tanks and bunds
4. Waste water recycling
5. Maintenance of water bodies and distribution system in the campus

Response: Any Two of the above

File Description	Document
Institutional data in prescribed format	View Document
Geo tagged photos of the facilities as the claim of the institution	View Document

7.1.6 Green campus initiatives of the Institution include 1. Restricted entry of automobiles 2. Battery-powered vehicles 3. Pedestrian-friendly pathways 4. Ban on use of plastics 5. Landscaping with trees and plants

Response: C. Any three of the above

File Description	Document
Institutional data in prescribed format	View Document
Geotagged photos / videos of the facilities if available	View Document

7.1.7 The Institution has disabled-friendly, barrier-free environment

1. Built environment with ramps/lifts for easy access to classrooms
2. Divyangjan friendly washrooms
3. Signage including tactile path, lights, display boards and signposts
4. Assistive technology and facilities for Divyangjan accessible website, screen-reading software, mechanized equipment

5.Provision for enquiry and information: Human assistance, reader, scribe, soft copies of reading material, screen reading

Response: C. Any three of the above

File Description	Document
Institutional data in prescribed format	View Document
Geo tagged photos of the facilities as per the claim of the institution	View Document
Link for additional information	View Document

7.1.8 Describe the Institutional efforts/initiatives in providing an inclusive environment i.e., tolerance and harmony towards cultural, regional, linguistic, communal socio-economic and other diversities. Add a note on how the Institution has leveraged its location for the services of the community (within 500 words).

Response:

Our institution provides a culturally inclusive environment with mutual respect, effective relationships, and clear communication. People of all cultural orientations work in harmony that is safe from abuse, harassment, or unfair criticism. In our institution everyone has the freedom to express their own opinions and are given equal opportunity to participate in teaching, learning, work and social activities. We maintain complete transparency and right from the enrollment and all admissions done only on merit without any biases. Equal opportunities are provided to the students in various activities conducted irrespective of their caste, creed, religion and region.

We have an active student council and NSS wing to inculcate a sense of unity, discipline and harmony. We believe in equality of cultures and traditions, evident from the fact that students belonging to different caste, religion and regions are studying in the college without any discrimination with no segregation of students for their lingual or communal background.

Anti-ragging cell acts as a key factor in maintaining tolerance and harmony among students. For the last decade there is not a single incidence of ragging which shows the efficient working of the cell. Grievances redressal committee is to address the grievances among students to maintain harmony in the college.

The girls are encouraged to take up leadership roles and participate actively in all student activities, promoting a sense of gender equality, many mixed team sports events are organized.

Various cultures are represented during the fests which depict sense of respect towards all the cultures. Sports, cultural and technical activities are organized inside the college to promote harmony towards each other. Annual festivals like college day, onam and Christmas celebrations are organized every year. Every department also undertake national level competitions to give opportunity to all the students to be part of activities of the Institution. A Freshers day induction is organized for the newbies to give them a delightful start to course. Exclusive competitions are organized by senior students for the first-year students. The

bonds are strengthened when the learning takes place within the peer group. The Ignite continuing Dental Education program is a unique initiative by the College for the Interns and faculty. It is a series of lectures organized by the interns for the benefit of everyone in the college. students.

The student associations also organize and are involved in movie clubs, cultural and fashion shows which promote a healthy competition by ensuring active participation of all batches. Commemorative days like Women's day, Teachers' day, Yoga day, national festivals are also celebrated in the college, for positive interaction among people of different economic and cultural backgrounds.

Blood donation camps are regularly organized either as a part of medical society program and also as a part of NSS. The National service scheme is very active in the campus. During the mega floods of the year 2018, the college director and a team of young doctors actively participated in flood relief activities. Faculty also contributed for the relief work and visited many camps to provide food and necessities.

File Description	Document
Link for supporting documents on the information provided (as reflected in the administrative and academic activities of the Institution)	View Document
Link for any other relevant information/documents	View Document

7.1.9 Code of conduct handbook exists for students, teachers and academic and administrative staff including the Dean / Principal / Officials and support staff. 1. The Code of conduct is displayed on the website 2. There is a committee to monitor adherence to the code of conduct 3. Institution organizes professional ethics programmes for students, teachers and the academic and administrative staff 4. Annual awareness programmes on the code of conduct are organized

Response: A. All of the above

File Description	Document
Institutional data in prescribed format	View Document
Information about the committee composition number of programmes organized etc in support of the claims	View Document
Details of the monitoring committee of the code of conduct	View Document
Details of Programs on professional ethics and awareness programs	View Document
Web link of the code of conduct	View Document

7.1.10 The Institution celebrates / organizes national and international commemorative days, events and festivals

Response:

As the father of our nation Mahatma Gandhiji said, the purpose of education is betterment of one's character. Pushpagiri college of dental sciences, right from the time of inception, believed in the roles that its students should play in their communities. Along with the academic performance it was always our goal to instill in students a sense of gratitude and a wish to serve the community by better connecting with them. It is also important to recognize the contributions left behind by the giants of our profession for making this world a better place to live and to leave it a better place than for the future generations. The Management, Administration, teaching and non-teaching faculty enthusiastically participate in various national and state festivals and organize commemorative days programs. Dates and various programs organized in our college are given below.

All the important festivals and commemorative days are celebrated or conducted in an appropriate manner in the college. Even though it may be organized by various departments or groups, participation from all departments and groups are ensured. Sports and cultural activities are highlights of the academic year with active involvement of not just students but faculty and non-teaching staff also, the arts and cultural fest usually conclude with a display of artistic talents of our students usually in the presence of invited cine artists and other celebrities.

The college also organizes separate functions for honoring and recognizing awards and accolades received by its faculty and students outside the campus. The university rank holders and highest mark holders in each department are also felicitated in front of the whole college. Awards and new positions in the university and various professional associations received by the faculty also are appropriately recognized by the college administration and management.

7.2 Best Practices

7.2.1 Describe two Institutional Best Practices as per the NAAC format provided in the Manual

Response:

1st BEST PRACTICE

1. Title of the Practice: I-KAP – Interns Knowledge and Skill Advancement Programme

2. Objectives of the Practice:

? To enrich existing knowledge on all aspects of dentistry.

? To help interns become up-to-date with the recent advancements/emerging technologies.

? To help the interns conducting the session to develop organization skills in arranging dental education programmes.

3. The Context:

? I-KAP sessions were first conceptualized in 2017 keeping in mind the need to provide a platform for the interns to enhance their knowledge beyond what is taught as a part of the BDS dental curriculum.

? Some of the challenging issues encountered was that a few interns lacked the self- confidence in their ability to organize a dental education programme. But with some encouragement and guidance, they were able to organize the sessions in an excellent manner.

4. The Practice:

I-KAP is a knowledge and skill advancement program for the interns of the institution. I-KAP sessions first commenced in 2017 and have been conducted on a regular basis on all

Thursdays. Each session lasts for 1.5 hours. The programme is organized under the able guidance of Dr. Vinod Mathew Mulamootil, Interns In-Charge. Attendance will be marked

for each session. It is mandatory for all interns on a rotation basis to be involved in organizing the programme.

Documentation will be done with photographs, reports and feedback assessments. Each session begins with an introduction of the speaker, followed by a lecture by one of the faculty members. Once the presentation is over, the session is open for interactive discussions.

Limitations faced:

The Covid-19 pandemic which hit our country in early 2020, prevented large social gatherings and this posed a challenge in the education sector. The pandemic caused a transient setback in our scheduled I-KAP sessions. This was overcome by conducting these sessions on a virtual platform using the zoom app.

5. Evidence of Success:

? The feedback collected after each event from all the members of the audience, clearly demonstrate that these I-KAP sessions are highly beneficial to the interns of our dental college.

? Since the interns are responsible for arranging and coordinating all aspects of the programme, they have gained confidence in organizing dental education programmes and this has been demonstrated by their enthusiasm in arranging Continuing Dental Education programmes (IGNITE CDE) in our dental college.

? I-KAP is also beneficial to the staff of our institution as they get a platform beyond the regular classrooms to share and impart their knowledge and clinical skills.

6. Problems Encountered and Resources Required:

Problems Encountered:

The Covid - 19 pandemic which first struck our country in early 2020, changed the way we access dental education. We soon found a way to overcome these hurdles by switching over to an online platform with the Zoom app.

Resources Required:

- ? Auditorium
- ? Light and Sound System
- ? Laptop and Projector
- ? Air Conditioning/Fans
- ? WIFI

2 ND BEST PRACTICE

1. Title of the Practice: Pushpavani Aarogyam – Live Dental Health Education Programme in association with Radio Macfast, 90.4 FM.

2. Objectives of the Practice:

- ? To enhance community development
- ? To provide dental health education for the general public including illiterate people
- ? To improve the presenter's subject knowledge and fluency in their mother-tongue (Malayalam)

3. The Context:

In a developing country like India, there exists a lack of dental health education programme utilizing an easily accessible medium. The utilization of radio as a means of mass communication has a great potential in disseminating vital health messages.

The presenters also needed to improve fluency in Malayalam and prior pre-programme publicity was also required.

4. The Practice:

Dr. Vinod Mathew Mulamoottil of Pushpagiri College of Dental Sciences first conducted the radio programme titled "Pushpavani Aarogyam" on Radio Macfast 90.4 FM on Feb 23 rd 2012. Since then, the radio programme has been conducted on all Wednesdays from 9am-10am under the able leadership of Dr. Vinod Mathew Mulamoottil and is mandatory for all interns. As of the 29 th of June 2016, 213 radio programmes had been completed, earning an entry in the prestigious Limca Book of Records in the year 2017.

The live radio programme is conducted and broadcasted from the Radio Macfast Studio, located at Mar Athanasios College for Advanced Studies Tiruvalla, South India. Transport is arranged by our institution. Each radio programme is conducted by the Radio Jockey, the Intern and a faculty. Following this, the listeners are given an opportunity to have a live phone-in question answer session. The presenting intern is expected to submit a report of the radio programme with photographic evidence.

Constraints/Limitations faced:

The programmes are conducted in Malayalam. A few staff and interns were not proficient in Malayalam. This was overcome by writing the Malayalam script in English and by carrying out several rehearsals.

5. Evidence of Success:

? Dr. Vinod Mathew Mulamoottil, Pushpagiri College of Dental Sciences, entered the LIMCA book of records in 2017 for conducting the longest running live oral health education programme.

Radio Macfast is available in five districts in Central Travancore and has close to ten lakh listeners with 5000 plus active listeners.

? A survey showed that Pushpavani Aarogyam is one among the top three programmes conducted by the radio station. A study among the interns in our institution, demonstrated that subject knowledge, communication skills and self-confidence were significantly improved through the programs. (Journal of International Oral Health 2016; 8(7):767-771)

6. Problems Encountered and Resources Required:

When the Covid-19 pandemic hit, our nation went into lockdown. Recording and broadcasting the live

programme at the studio was no longer possible. This will be overcome by recording the radio programme within our institution and sending the file to Radio Macfast.

The programmes are conducted in Malayalam. A few presenters were not proficient in Malayalam. This was overcome by writing the Malayalam script into the English.

Resources required:

? Transportation

? Radio Studio Facility

File Description	Document
Link for best practices page in the Institutional web site	View Document
Link for any other relevant information	View Document

7.3 Institutional Distinctiveness

7.3.1 Portray the performance of the Institution in one area distinctive to its priority and thrust within 500 words

Response:

INSTITUTIONAL DISTINCTIVENESS

The institution has given priority to create and enhance a research environment among students and faculty. The college supports research through its research & development unit and ethics committee. The research development unit conducts lectures, workshops and training classes on research methodology and related topics. It also informs of the existing funded projects to faculty and assist in project writing.

The Pushpagiri Research center (PRC) is a centralized research facility for the institutions runs by Pushpagiri Medical Society. which established in 2009. It is a Scientific and Industrial Research Organization (SIRO) recognized by the Department of Scientific and Industrial Research (DSIR), Ministry of Science & Technology, Government of India. It was initiated in the year 2009 and functions in Pushpagiri Medical College Campus as a central research facility. PRC features open-plan, multifunctional research Laboratory and it conducts, promotes research in interdisciplinary areas of science such as Tissue Engineering, Phytoceutical research, Molecular Biology, Cell Culture, Microbial Technology, Metabolic disorders, Biochemistry and Nanotechnology. The animal house was established in 2011 provides the researchers to carry out various activities using animal models. An Institutional animal ethics committee for small animals (602/PO/Re/S/02/CPCSEA) constituted by the Animal Welfare Division of Government of India for research on small animals is also present. Yearly workshops on animal handling are organized. Provides opportunities for students, teachers & scientists from within and outside the institute to carry out experimental works using animal model

PRC offers a unique, pluralistic and open research culture that is supported by high-end

infrastructure and instrument facilities (instrument list is attached). Various research schemes funded by State & Central Government agencies like DST, DBT, ICMR, BRNS and International agencies like Bill and Melinda Gates Foundation.

PRC is an upcoming research centre and mainly focuses on translating the ideas from laboratory to commercial market. The research centre is currently carrying out various researches in wound healing, tissue regeneration, synthesis of green nanoparticle, drug delivery, drug discovery and inborn errors of metabolism which is in collaboration with various institutions. PRC is having MOU with various government institutes like HLL- Trivandrum, CIFT-Kochi, MG University-Kottayam and private institutes like MACFAST-Thiruvalla, VIT-Tamil N?du, Mar Ephraim College -Marthandam, SRM University-Tamil N?du, Polyskin-Alleppey, Yenepoya-Mangalore etc. The PG's, faculty and PhD candidates make use of the facilities in PRC.

No. of PhD candidates (ongoing): 2

No. of funded student projects with ICMR & KSTEC: 2

No. of funded national & international projects for faculty: 3

No. of projects with PRC animal house: 6

No. of publications in indexed journals (PubMed, Web of Science, Scopus): 63

No. of publications in nonindexed or other indexed journals: 413

File Description	Document
Link for any other relevant information	View Document
Link for appropriate web page in the institutional website	View Document

8. Dental Part

8.1 Dental Indicator

8.1.1 NEET percentile scores of students enrolled for the BDS programme for the preceding academic year.

Response: 89.21

8.1.1.1 Institutional mean NEET percentile score

Response: 89.21

File Description	Document
NEET percentile scores of students enrolled for the MBBS programme during the preceding academic year	View Document
List of students enrolled for the BDS programme for the preceding academic year	View Document
Institutional data in prescribed format	View Document

8.1.2 The Institution ensures adequate training for students in pre-clinical skills

Response:

The students enrolled for BDS and MDS program are given adequate training both in classroom and various labs to make them proficient in various pre-clinical skills.

The details are described below

Pre – clinical Skills

Dental Council of India has prescribed preclinical work as a part of curriculum. The students are given opportunity to work on models to simulate the oral structures which helps them in nurturing creativity and better understanding of the subject. The preclinical curriculum starts as soon as the student enters his/her first academic year and continues throughout their course. The preclinical exercises that the students have to perform as listed year wise in the following.

First year

Preclinical Prosthodontics, the student will have to perform the following exercises

- a. Manipulation of gypsum products
- b. Manipulation of impression compound
- c. Manipulation of modeling wax, self cure and heat cure resin
- d. Special tray fabrication

Preclinical work in Oral Histology

1. Teeth carving in wax blocks
2. Slide examination through microscopes

2. Second year

As the student enters their second year of their curriculum, their preclinical exercises include both Conservative Dentistry and Prosthodontics. The following exercises are performed by the students.

Prosthodontics

1. Teeth setting in Class I occlusion
2. Fabrication and processing of complete denture
3. Repair work of complete denture

Endodontics – Pre clinical Lab

Preclinical Exercises - Undergraduate

1. Plaster models – Cavity Preparations (Class I – Class V)
2. Manipulation of Dental restorative cements
3. Liner/base application in typhodont teeth

3. Third year

Department of Orthodontics

1. Wire bending exercises
2. Appliance fabrication
3. Cephalometric tracing

Department of Oral Pathology

1. Ground sections of histological specimens
2. Microscopic examination of slides

Department of Prosthodontics

1. Jacket Crown preparation and fabrication of its wax pattern
2. Full veneer crown preparation and fabrication of its wax pattern
3. Three quarter crown preparation and fabrication of its wax pattern
4. Full crown preparation and fabrication of its wax pattern

4. Final year

- a. Wire bending exercises in Department of Orthodontics
- b. Root canal treatment in extracted natural anterior teeth
- c. Tooth preparation in natural extracted teeth
- d. Suturing techniques in suture bed.

Conservative Dentistry and Endodontics

Preclinical Exercises – Postgraduate

1. Natural teeth –

- Class II amalgam preparation
- Class II inlay preparation
- Pin retained amalgam on molar teeth
- Full crown preparation
- Veneers – anterior teeth
- Composite inlay – Class II

1. Horizontal and vertical sectioning of maxillary and mandibular teeth

2. Access cavity preparation

3. Post and core build up and casting

Department of Prosthodontics

Preclinical Exercise – Postgraduate

1. Teeth Setting

2. Occlusal Rim Fabrication

3. Acrylization

4. Cast pouring

5. Trimming

6. Polishing

7. Crown Cutting

Department of Orthodontics

Preclinical Exercises – Postgraduate

1. Wire bending exercises
2. Appliance fabrication
3. Cephalometric tracing
4. Model analysis
5. Functional Appliance fabrication

The institution has fully equipped pre-clinical Conservative dentistry, Prosthodontics, Orthodontics, Pedodontics and oral pathology laboratories. These work spaces offer our students the opportunity and facilities to learn the skills involved in treating real patients.

File Description	Document
Geo tagged Photographs of the pre clinical laboratories	View Document

8.1.3 Institution follows infection control protocols during clinical teaching

- 1. Central Sterile Supplies Department (CSSD) (Registers maintained)**
- 2. Provides Personal Protective Equipment (PPE) while working in the clinic**
- 3. Patient safety curriculum**
- 4. Periodic fumigation / fogging for all clinical areas (Registers maintained)**
- 5. Immunization of all the caregivers (Registers maintained)**
- 6. Needle stick injury Register**

Response: B. Any 4 of the above

File Description	Document
Relevant records / documents for all 6 parameteres	View Document
Institutional data in prescribed format	View Document
Immunization Register of preceding academic year	View Document
Disinfection register (Random Verification by DVV)	View Document
Central Sterile Supplies Department (CSSD) Register (Random Verification by DVV)	View Document

8.1.4 Orientation / Foundation courses practiced in the institution for students entering the college / clinics / internship:

Response:

Orientation programmes are conducted regularly for undergraduate and post graduate students in the institution. I BDS students on joining the course are given the foundation/ orientation course by the Academic and administrative in charges. The students have a week of orientation, visiting all the departments of our dental and medical college. The visit to all clinical, preclinical departments and skill labs facilitate students to the professional arena. The post graduate students on admission similarly have the orientation programme headed by academic and research director. The respective heads and pg guides orient the pg students. A foundation course on research methodology is being organized every year. The first DORA students are also given orientation during the first week of admission and addressed by respective faculty in charges. Every student entering the clinical postings is given an orientation before attending patients.

File Description	Document
Programme report	View Document

8.1.5 The students are trained for using High End Equipment for Diagnostic and therapeutic purposes in the Institution.

1. Cone Beam Computed Tomogram (CBCT)
2. CAD/CAM facility
3. Imaging and morphometric softwares
4. Endodontic microscope
5. Dental LASER Unit
6. Extended application of light based microscopy (phase contrast microscopy/polarized microscopy/fluorescent microscopy)
7. Immunohistochemical (IHC) set up

Response: D. Any 2 of the above

File Description	Document
Invoice of Purchase	View Document
Institutional data in prescribed format	View Document
Links for additional information	View Document

8.1.6 Institution provides student training in specialized clinics and facilities for care and treatment such as:

1. Comprehensive / integrated clinic
2. Implant clinic
3. Geriatric clinic
4. Special health care needs clinic
5. Tobacco cessation clinic
6. Esthetic clinic

Response: B. Any 4 of the above

File Description	Document
Institutional data in prescribed format	View Document
Geotagged Photographs of facilities	View Document
Certificate from the principal/competent authority	View Document

8.1.7 Average percentage of full-time teachers who have acquired additional postgraduate Degrees/Diplomas/Fellowships beyond the eligibility requirements from recognized centers/universities in India or abroad. (Eg: AB, FRCS, MRCP, FAMS, FAIMER & IFME Fellowships, Ph D in Dental Education etc.) during last five years

Response: 1.61

8.1.7.1 Number of fulltime teachers with additional PG Degrees /Diplomas /Fellowships/Master Trainer certificate

2020-21	2019-20	2018-19	2017-18	2016-17
3	1	0	0	1

File Description	Document
List of fulltime teachers with additional Degrees, Diplomas such as AB, FRCS, MRCP, FAMS, FAIMER/IFME Fellowships, Ph D in Dental Education etc. during the last 5 years	View Document
Institutional data in prescribed format	View Document
Attested e-copies of certificates of postgraduate Degrees, Diplomas or Fellowships	View Document

8.1.8 The Institution has introduced objective methods to measure and certify attainment of specific clinical competencies by BDS students/interns as stated in the undergraduate curriculum by the Dental Council of India

Response:

The students are both directly and indirectly evaluated for their quality of education received and their overall development into a competent dental practitioner. The efficiency of our students is being assessed on the following 10 criteria in each department:

Knowledge, competency and skill, punctuality, ability to manage patients, quality of treatment, follow up of treatment, patient motivation for further treatment, communication abilities, capability to work in a team and initiative for participation in research work and score of 1-5 (1- Poor, 2-Below Average, 3-Average, 4-Above Average (Good), 5-Excellent) is given according to their ability and performance and then summative of the scores to get the total score. Students who are advancing in above categories are further encouraged and the struggling students are guided as to where they can make improvements. Since we receive students from all backgrounds, attention is given to their social, moral and academic development.

The final grade is 0-10 Poor, 11-12 below Average, 21-30 Average, 31-40 above average (good), 41-50 excellent.

Students' elective postings given to those department where they scored less

File Description	Document
Report on the list and steps taken by the College to measure attainment of specific competencies by the BDS students/interns stated in the undergraduate curriculum during the last five years	View Document
List of competencies	View Document

8.1.9 Average percentage of first year students, provided with prophylactic immunization against communicable diseases like Hepatitis-B during their clinical work in the last five years.**Response:** 53.03

8.1.9.1 Number of first year students, provided with prophylactic immunization against communicable diseases like Hepatitis-B during their clinical work in the last five years

2020-21	2019-20	2018-19	2017-18	2016-17
0	42	39	42	45

8.1.9.2 Number of first year Students admitted in last five years

2020-21	2019-20	2018-19	2017-18	2016-17
72	69	61	62	62

File Description	Document
Policies documents regarding preventive immunization of students, teachers and hospital staff likely to be exposed to communicable diseases during their clinical work.	View Document
List of students, teachers and hospital staff, who received such immunization during the preceding academic year	View Document
Institutional data in prescribed format	View Document
Any other relevant information.	View Document

Other Upload Files

1	View Document
---	-------------------------------

8.1.10 The College has adopted methods to define and implement Dental graduate attributes with a system of evaluation of attainment of such attributes.**Response:**

The learning outcomes for the course are laid according to the syllabus prepared by the BoS committee of the Kerala University of Health Science. The expected outcomes are made known to all the students in the beginning of the academic year by the respective faculties. All the faculties are well aware of the learning outcomes as they are involved in the teaching and learning process. Learning outcomes for all academic

programs have been displayed on the college website and are revised periodically.

The outcome is assessed by longitudinal assessment over a period of time, daily evaluations which include clinical competence of each case, viva, diagnosis, treatment planning, execution of procedure and skill set exhibited, chart/model stimulated evaluation etc. Each department has a list of treatment procedures to be done in varying levels of difficulty by each students. There is a quota of work to be done (cases to be completed) and presentations and charts or models to be presented by the students for completion of work in each department. Continuous educational programs and clinical training programs are conducted at regular periods to upgrade the knowledge as well as sharpen the clinical skills.

Students are given individual attention while performing a treatment procedure wherein every step is supervised by the staff and corrected. The faculty members becomes the students mentor, advocate, cheerleader, disciplinarian and remedial resource. The entire programmes, special lectures and discussions in the classroom are centered on the learning objectives of the institution and there is continuous evaluation of the program outcomes, program specific outcomes and course outcomes.

File Description	Document
Dental graduate attributes as described in the website of the College.	View Document

8.1.11 Average per capita expenditure on Dental materials and other consumables used for student training during the last five years.

Response: 0.24

8.1.11.1 Expenditure on consumables used for student clinical training in a year

2020-21	2019-20	2018-19	2017-18	2016-17
125	102	79	76	47

File Description	Document
Institutional data in prescribed format	View Document
Audited statements of accounts.	View Document
Any additional information	View Document
Links for additional information	View Document

8.1.12 Establishment of Dental Education Department by the College for the range and quality of Faculty Development Programmes in emerging trends in Dental Educational Technology organized by it.

Response:

The idea of a dental education unit (DEU) for the college was mooted during the formulation of the five year plan for the college and subsequently the DEU was established in December 2020.

Goals of DEU

- To develop into an educational resource Center that molds a teacher into a competent Dental Educator
- To enhance the teaching, learning and assessment skills of the faculty member at various levels of educational Initiatives

The main objectives of the Dental Education Unit are to be responsible for the educational processes

- 1.Ensure continuous quality improvement in teaching learning and assessment in professional education
- 2.Plan, implement and evaluate curricular development and faculty development in the college .
- 3.Facilitate educational research through projects research publication update
- 4.Faculty updated of the current trends in medical education by conducting workshops and conferences
- 5.Contribute towards policy development feedback system. utsessment communication
- 6.Develop and implement instructional design for undergraduate and post graduate courses
- 7.Emphasize tucational collaboration between dentistry and alled health professions

The Team

- Dr. Subbalekshmi- Co-ordinator
- Dr. Manuja
- Dr. Prameetha
- Dr. Anju

Programs conducted in 2020-21

- 1.Literature search
2. Workshop for PG's for Preparation of IRB Presentation

Other Upload Files

1

[View Document](#)

5. CONCLUSION

Additional Information :

Charity begins at home, but at Pushpagiri College of Dental Sciences, it seldom stays confined. Founded in 2006, and being at the rising curve of excellence and quality ever since, our institution has not only created milestones in research and medical care, but also touched the summits of humanitarian and charitable causes. It has forever been our reputed organization's unending endeavor to provide a wholesome nurture to our patients irrespective of their financial shortcomings and to create a holistic environment of helping and healing. Time and again we have stood formidable on our beneficence towards the needy. Our brief history of existence has a multitude of charitable implications. For example, our Mobile Dental Clinic launched in 2006, is the first of its kind in Kerala, which renders dental treatment in areas where access to health care is limited, imparts dental awareness among the general public through dental camps and conducts school health programs among schools of Kerala. This state of the art mobile dental clinic, which can deliver quality dental care, forms the highlight of the institution. This centrally air-conditioned mobile dental clinic boasts of a treatment cabin (132 sq.ft), which has two fully automated dental units each, necessary for rendering dental treatment, thereby combining both the elements of prodigious medical supervision and bountiful humane cause. Amongst other activities, our prestigious organization continues to inculcate a philanthropic instinct and a policy of social commitment amongst its students and staff alike, in cognition with its Outreach programs for serving the local community. Our Dental Health Education programs are not limited to schools and dental centre's alone, we go a step ahead by including electronic and print media as a medium for widespread dental education among masses. Our programs broadcasted over the Radio Macfast 90.4, Hello Doctor program in Kairali People TV and articles published in Malayala Manorama and Rashtra Deepika has proven to be a remarkably unique and unparalleled in terms of the substantial help and awareness it proliferated through its reach.

Concluding Remarks :

Our soul vision stays to kindle the fire of knowledge and compassion in the eager and inquisitive minds of our students and guiding them enduringly towards a constitution of knowledge, humanity and enlightenment, all being the founding pillars of our revered organization.

As the golden words of our mission statement reads, "We care, God cures", it remains our everlasting endeavor to provide a closely knit dispensation of care and cure. Time and again we have stood formidable on our beneficence towards the needy. Our brief history of existence has a multitude of charitable implications.

To conclude, we at Pushpagiri College of Dental Sciences believe and advocate the paramount of quality of service, provided through the gentle and nourishing hands of generosity and endowment.

6.ANNEXURE

1.Metrics Level Deviations

Metric ID	Sub Questions and Answers before and after DVV Verification																				
2.4.3	<p>Average teaching experience of fulltime teachers in number of years (preceding academic year)</p> <p>2.4.3.1. Total teaching experience of fulltime teachers in number of years (cumulative experience)</p> <p>Answer before DVV Verification : 616 years Answer after DVV Verification: 812 years</p> <p>Remark : DVV has given the input as per profile 2.3.4</p>																				
2.4.5	<p>Average Percentage of fulltime teachers who received awards and recognitions for excellence in teaching, student mentoring, scholarships, professional achievements and academic leadership at State, National, International levels from Government / Government-recognized agencies / registered professional associations / academies during the last five years</p> <p>2.4.5.1. Number of fulltime teachers who received awards and recognitions for excellence in teaching and student mentoring, scholarships, professional achievements and academic leadership at State, National, International levels from Government / Government-recognized agencies / registered professional associations / <i>academies</i> during the last five years</p> <p>Answer before DVV Verification:</p> <table border="1"> <thead> <tr> <th>2020-21</th> <th>2019-20</th> <th>2018-19</th> <th>2017-18</th> <th>2016-17</th> </tr> </thead> <tbody> <tr> <td>0</td> <td>2</td> <td>0</td> <td>0</td> <td>2</td> </tr> </tbody> </table> <p>Answer After DVV Verification :</p> <table border="1"> <thead> <tr> <th>2020-21</th> <th>2019-20</th> <th>2018-19</th> <th>2017-18</th> <th>2016-17</th> </tr> </thead> <tbody> <tr> <td>0</td> <td>1</td> <td>0</td> <td>0</td> <td>1</td> </tr> </tbody> </table> <p>Remark : DVV has made the changes as per shared full time teachers by HEI.</p>	2020-21	2019-20	2018-19	2017-18	2016-17	0	2	0	0	2	2020-21	2019-20	2018-19	2017-18	2016-17	0	1	0	0	1
2020-21	2019-20	2018-19	2017-18	2016-17																	
0	2	0	0	2																	
2020-21	2019-20	2018-19	2017-18	2016-17																	
0	1	0	0	1																	
3.1.2	<p>Average Percentage of teachers awarded national /international fellowships / financial support for advanced studies/collaborative research and participation in conferences during the last five years</p> <p>3.1.2.1. Number of teachers awarded national/ international fellowship / Financial support for advanced studies/collaborative research and conference participation in Indian and Overseas Institutions year-wise during the last five years</p> <p>Answer before DVV Verification:</p> <table border="1"> <thead> <tr> <th>2020-21</th> <th>2019-20</th> <th>2018-19</th> <th>2017-18</th> <th>2016-17</th> </tr> </thead> <tbody> <tr> <td>2</td> <td>2</td> <td>1</td> <td>1</td> <td>2</td> </tr> </tbody> </table> <p>Answer After DVV Verification :</p> <table border="1"> <thead> <tr> <th>2020-21</th> <th>2019-20</th> <th>2018-19</th> <th>2017-18</th> <th>2016-17</th> </tr> </thead> <tbody> <tr> <td></td> <td></td> <td></td> <td></td> <td></td> </tr> </tbody> </table>	2020-21	2019-20	2018-19	2017-18	2016-17	2	2	1	1	2	2020-21	2019-20	2018-19	2017-18	2016-17					
2020-21	2019-20	2018-19	2017-18	2016-17																	
2	2	1	1	2																	
2020-21	2019-20	2018-19	2017-18	2016-17																	

2020-21	2019-20	2018-19	2017-18	2016-17
0	0	0	0	0

Remark : DVV has not consider shared certificate of fellowship as award certificate by HEI.

4.3.4 Average annual expenditure for the purchase of books and journals including e-journals during the last five years

4.3.4.1. Annual expenditure for the purchase of books and journals including e-journals year-wise during last five years (INR in Lakhs)

Answer before DVV Verification:

2020-21	2019-20	2018-19	2017-18	2016-17
9.79155	28.21269	25.74818	7.73708	35.06890

Answer After DVV Verification :

2020-21	2019-20	2018-19	2017-18	2016-17
5.79155	19.21269	11.74818	4.73708	15.06890

Remark : DVV has excluded the purchase of News papers from Audited statement.

4.5.1 Average Expenditure incurred on maintenance of physical facilities and academic support facilities excluding salary component, as a percentage during the last five years

4.5.1.1. Expenditure incurred on maintenance of physical facilities and academic support facilities excluding salary component year-wise during the last five years (INR in lakhs)

Answer before DVV Verification:

2020-21	2019-20	2018-19	2017-18	2016-17
37.79602	8.89010	4.28229	4.43732	1.89880

Answer After DVV Verification :

2020-21	2019-20	2018-19	2017-18	2016-17
9.98	4.401	3.8229	2.12	1.89880

Remark : DVV has considered only maintenance of physical facilities and academic support facilities excluding salary shared audited statement by HEI.

5.1.2 Capability enhancement and development schemes employed by the Institution for students:

1. Soft skill development
2. Language and communication skill development

	<p>3. Yoga and wellness</p> <p>4. Analytical skill development</p> <p>5. Human value development</p> <p>6. Personality and professional development</p> <p>7. Employability skill development</p> <p>Answer before DVV Verification : A. All of the above Answer After DVV Verification: C. Any three of the above Remark : DVV has considered C. Any three of the above as per shared report by HEI.</p>
<p>5.4.2</p>	<p>Provide the areas of contribution by the Alumni Association / chapters during the last five years</p> <p>1. Financial / kind 2. Donation of books /Journals/ volumes 3. Students placement 4. Student exchanges 5. Institutional endowments</p> <p>Answer before DVV Verification : B. Any four of the above Answer After DVV Verification: E. Any one of the above Remark : DVV has considered E. Any one of the above as per HEI clarification.</p>
<p>7.1.6</p>	<p>Green campus initiatives of the Institution include</p> <p>1. Restricted entry of automobiles</p> <p>2. Battery-powered vehicles</p> <p>3. Pedestrian-friendly pathways</p> <p>4. Ban on use of plastics</p> <p>5. Landscaping with trees and plants</p> <p>Answer before DVV Verification : B. Any four of the above Answer After DVV Verification: C. Any three of the above Remark : DVV has considered C. Any three of the above as per shared report by HEI.</p>

2.Extended Profile Deviations

<p>Extended Profile Deviations</p>
<p>No Deviations</p>

NAAC